

PĀRENGARENGA INCORPORATION



“One day this will be yours”

Annual Report 2018

Pūrongo 2018



Pārengarenga Incorporation

Annual Report • 2018

3	Strategic Plan Overview
4	Agenda
5	Notice of Motions
6	Minutes of 2017 AGM
9	Chairman's Report 2018
13	Financial Summary



Strategic Plan Overview

Mahere Rautaki

Vision Statement

Tirohanga Whāioio

“A world class business of the land and sea;
Growing our people and communities;
Shaping the future of the Far North”

Core Purpose

Te Aronga

Pārengarenga - He Puna Oranga, E rahi e!
Serving our wellbeing to the world

Core Values

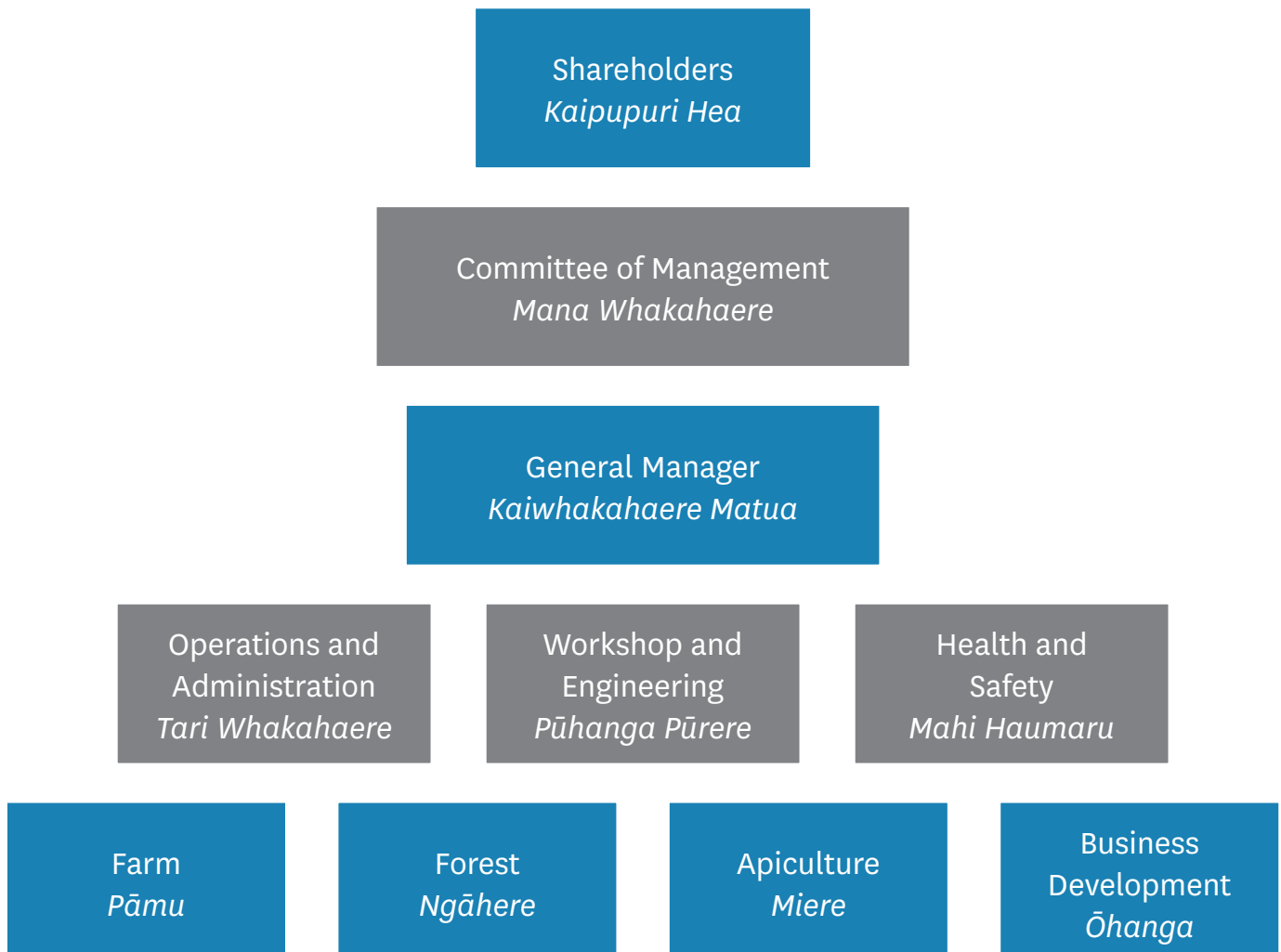
Ngākau Pono

Te Pono ki te kaupapa, Te ū ki te kaupapa,
Manaakitanga, Rangatiratanga, Wairuatanga,
Kotahitanga, Pūkengatanga, Kaitiakitanga

Big Hairy Audacious Goal (BHAG)

Tiro Tawhiti

By 2030, we will give back to our community \$1m every year [earned by selling our premium brands to the world].





Agenda

Rārangi Take

9.00am	<ul style="list-style-type: none">• KARAKIA AND MIHI• APOLOGIES Ngā Tono Aroha• OBITUARIES Ngā Maumahara• CONFIRMATION OF PROXIES <hr/>
9.45am	<ul style="list-style-type: none">• CONFIRMATION OF 2017 ANNUAL GENERAL MEETING MINUTES Ngā Minitī 2017 kia Whakatūturutia <hr/>
10.30am	<ul style="list-style-type: none">• CHAIRMAN'S REPORT Pūrongo o te Heamana <hr/>
12.00pm	<ul style="list-style-type: none">• ANNUAL FINANCIAL ACCOUNTS Ripoata Pūtea mo te Tau <hr/>
12.30pm	<ul style="list-style-type: none">• APPOINT AUDITOR AND SHARE VALUER APPOINTMENT Whakaritenga Kaitaatarī Pūtea me te Kaiwariu Hea• RETURNING OFFICER AND SCRUTINEERS APPOINTMENT Whakaritenga mo te Aapiha mo ngā Pōti me ngā Kaitirotiro• MANAGEMENT COMMITTEE ELECTION Pōtitanga Komiti Whakahaere <hr/>
1.00pm	<ul style="list-style-type: none">• VOTING CLOSED Kapinga o ngā Pōti• LUNCH TINA <hr/>
1.40pm	<ul style="list-style-type: none">• ELECTION RESULTS Pānuitanga o ngā Pōti <hr/>
1.50pm	<ul style="list-style-type: none">• GENERAL BUSINESS Ngā Take Whānui <hr/>
3.00pm	<ul style="list-style-type: none">• CLOSE Mutunga

FULL COPIES OF REPORTS ARE AVAILABLE UPON REQUEST FROM OUR OFFICE



Notice of Motions

Ngā Mōtini Panui

Apologies

1. **THAT** the Apologies for the combined 2018 Pārengarenga A Incorporation and Pārengarenga B3C Trust AGM be accepted.

Proxies (Confirmation of Proxies)

2. **THAT** the Proxies for the combined 2018 Pārengarenga A Incorporation and Pārengarenga B3C Trust AGM be accepted.

Minutes (Confirmation of previous Annual General Meeting Minutes)

3. **THAT** the circulated Minutes of the previous combined Pārengarenga A Incorporation and Pārengarenga B3C Trust AGM held on 25th November 2017 be confirmed as a true and correct record.

Reports

4. **THAT** the Chairman's Annual Report 2018 be adopted.

5. **THAT** the combined Pārengarenga A Incorporation and Pārengarenga B3C Trust audited consolidated annual accounts for the year ending 30 June 2018 be adopted.

Appointment of Auditor and Share Valuer

6. **THAT** PKF Francis Aickin Limited, Chartered Accountants of Kaitaia, be retained as Auditors for the Pārengarenga A Incorporation for the 2018/2019 financial year and

7. **THAT** BDO Northland, Chartered Accountants of Kerikeri, be appointed as Share Valuers for the Pārengarenga A Incorporation for the 2018/2019 financial year.

Setting of the next Annual General Meeting date

8. **THAT** the date be set down for Saturday 23rd November 2019.





Minutes

Ngā Minitī 2017

Of the combined Pārengarenga A Incorporation and B3C Trust
Annual General Meeting held at Potahi Marae, Te Kao 25th November 2017

Start:

9.18 am

Opening Whakamoemiti:

Joe Everitt

Mihi:

Joe Everitt, Maahia Nathan, Chad Paraone

Trustees:

Chad Paraone (Chairman), Ngainanga Kapa (Deputy Chair), Pereniki Conrad, Clayton Wiki, Maahia Nathan, Harry Kapa, Rihari Wiki

Present:

Bella Nathan
Bernadine Kapa
Betty Harris
Celine Matiu
Chad Paraone
Chelsea Brown Gurnick
Clayton Wiki
D Brown
Dean Lee
Dolly Desmond
Doreen Paparao
Duanne Golley
Duncan Kapa
Elizabeth Samuels
Elsie Ngawhika
Ema Kaipo-Dunn
Francis Raharuhi
Geranium Leni Kapa
Gillian Harper
Harding Wharerau
Harry Kapa
Harry Wharerau
Hemowai Minty
Heta Conrad
Hinerangi Murray
Hiraina Mitai-Harris
Hoana E Karekare
Hugh Ford
Huia Cooper
Ian Smith
James Mani
Jane Tahana-Allan
Jerry Brown
Jim Minty
Jim Pakinga Williams
Jo Howearth
Joe Everitt
John Tahana
John Walsh
Jon Brough
Josephine Nathan
Kaneihana Kaaka
Karepori Kaipo
Kelvin Subritzky
Lance Taylor
Lawrence Lazarus
Lennis Lee
Lisa Everitt
Lovi-Ann Murray
Maahia Nathan
Maka Walsh
Maringinoa Wood
Mark Nathan
Mete Kaaka
Michelle Wi
Miriam Harris
Mita Cooper
Moana Henare
Morehu Kaaka
Ngainanga Kapa
Ngairi Wiki
Nikarena
Pauline Wilton
Pereniki Conrad
Peter Houston
Phyllis Kapa
Priscilla Paparao
Rachel Karena
Rangimarie Rameka
Rangimarie Wikaira
Rihari Wiki
Robert Kaaka
Roselin Laban
Rosie Conrad
Sally Golley
Shady Davidson
Shirley-Marie Wharerau
Sonya Wherry
Tania Good
Thomas Wiki
Tiwaha Everitt
Toka Maaka
Tone Te Rore
Tony Brown
Tui Kapa
Tutangiora Nathan
Tyshana Nathan
Victor Harris
Whiti Abraham
Whiti Awarau
William Pouwhare
Winiata Brown
Zona Harris

Apologies:

Aaron Keepa Wetere
Anaru Rieper
Arthur Eruera McMath Whanau Trust
Barry and Rita Carey
Bracken Maxwell
Catherine Petera
Chad Maxwell
Charie Rieper
David Henry Kaaka
Deena Taylor
Harry Wiki
Henry Tahana
Hohua & Ripeka Para Whanau Trust
Iris Cecelia Thompson nee Waipouri me Francis
Lawrence Thompson Whanau Trust
Jocelyn Glucina
Joyce Baker
Kingi Wiki
Luke Piripi Kaaka
Marara Walker
Matt Rieper
Maudie Hughes
May Lee Takawe
Mei Grace Everitt
Neil Garner
Nick Leat
Paihere Kaaka and whanau
Parani Rhonda Wiki
Parani Wiki
Reuben Paparao
Richard Wiki
Rima Matiu Kaaka
Russell Hockley
Sandra Leat
Stewart Egypt Smith and Kate (Harris)
Smith Whanau Trust
Tahimoana Kapa
Tatana Whanau
Te Awhina Clarke
Ted Creelman
Verna Lu Te Aroha Kaaka
Wahanui Maikara Kaaka
Waitai Petera
Waitarehu Anderson
Waylon Wiki

1. THAT the apologies of the 2017 combined Pārengarenga A Incorporation and Pārengarenga B3C Trust Annual General Meeting be accepted.

Moved by Tiwaha Everitt

Seconded by Pauline Wilton

Carried



Obituaries

Abraham “Jimmy” Heka	Kingi Ihaka
Alamein Harawira	Lorenzo Miranda
Albert Walker	Marsh Dixon
Angie Haywood	Matekini (Teti) Wiki
Bella Taare	Meeri Aperahama
Bradley Brown	Merryann Urumau
David Robert Allan	Meti Kerehoma
Dawn Hetaraka	Moearoha (Moesa) Kaipara
Ellen Ihaka	Pirihira Hohepa
Emily Nathan	Rapata Roberts
Harry Poona	Rikki Nathan
Hemi Kapa	Te Pania Tahitahi
John Roberts	Vincent Kuru-Nathan
Judge David Ambler	Waata Rameka
Kahu-James Harawira	

A minute’s silence be observed as a mark of respect for those who had passed on.

Proxies

Shareholder	First Proxy	Second Proxy
Nick Leat	Gillian Harper	-
Sandra Leat	Gillian Harper	-
Waitarehu Anderson	Tui Kapa	Tiwha Everitt
Mei Grace Everitt	Tui Kapa	Tiwha Everitt
Parani Rhonda Wiki	Gillian Harper	-
Arthur Eruera McMath Whanau Trust	Gillian Harper	-
Waitai Petera	Abigail Sarah Larsen	-

Minutes

Confirmation of Previous Annual General meeting minutes:

- 2. THAT** the Minutes of the combined Pārengarenga A Incorporation and Pārengarenga B3C Trust Annual General Meeting held on 26th November 2016 as previously circulated be taken as read.

Moved by Tiwha Everitt

Seconded by Joe Everitt

Carried

- 3. THAT** the Minutes of the combined Pārengarenga A Incorporation and Pārengarenga B3C Trust Annual General Meeting held on 26th November 2016 be confirmed as a true and correct record.

Moved by Tiwha Everitt

Seconded by Joe Everitt

Carried

Matters Arising:

New Business Development - moved to Chairman’s Report
Te Pua Reserve - moved to General Business
Mutton - moved to General Business

Chairman’s Report

The Chairman spoke to the 2017 report.

Key discussion points arising:

Strategic Plan - One of the key focuses is that the Incorporation seeks to develop and manage a balanced portfolio of business interests, to support the delivery of benefits to shareholders.

Financial - Shareholders are aware that the Incorporation’s main source of income is from the farms, this is until the harvesting of the forest commences. The Incorporation has managed to pay off all the remaining debt from the fish farm. This means there is no long-term debt which will enable the incorporation to look into other business opportunities and ventures.

Forestry – It is explained that the incorporation has been looking at options to develop income off the forests including harvesting within the next four years as opposed to eight years as previously stated and the possibility of harvesting windbreaks and shelterbelts. There were concerns from shareholders regarding both these options. There were concerns with the quality of timber when harvesting earlier and with the effects on the rest of the forest and farms if windbreaks and shelterbelts were harvested. The Incorporation explained that all these factors will be taken into account. Shareholders question where the Forestry Manager was, it was explained that the previous forestry manager had been working outside of his delegated authority his resignation was received and accepted.

Farm - There has been a major focus on upskilling current staff and develop our own people. It is the Incorporation’s intention to be able to utilise our own people to provide specialists services rather than contracting in outsiders. There have also been significant developments across all areas of farming including soil and pasture, fencing and water reticulation.

Apiculture - The Incorporation has teamed up with Kauri Park Nurseries Ltd to develop a medium-term apiculture venture. Kauri Park have been able to provide us with Apiculture knowledge and a consistent supply of native plants and trees. The Incorporation has recently started an environmental programme to not only protect our waterways but to also enhance our apiculture and tourism sectors. There have been 110,000 native trees planted this year and the incorporation have appointed a beekeeper to work alongside of Kauri Park.

Shareholders have concerns around the different types of trees that are being brought from outside our area and the effect these trees will have in our area. There is a suggestion that the Incorporation should look into creating a nursery locally and using our seeds to use for replanting.

Takutai Moana - Earlier this year the Incorporation submitted an application to the Crown and High Court seeking recognition of the foreshore and seabed interests of Pārengarenga shareholders and associated iwi. The Incorporation have been in discussions with Te Runanga Nui o Te Aupōuri Trust. The Incorporation have agreed to apply for customary title and will leave the management up to the Runanga and that the Runanga can apply for customary title.

There was a lot of debate regarding whether or not the Incorporation is an iwi organisation. Shareholders were concerned that the Incorporation was overstepping its authority by calling itself an “iwi” organisation. Shareholders explained that Te Runanga Nui o Te Aupōuri was mandated by iwi members as the single Te Aupōuri iwi authority and although the majority of Incorporation shareholders were of Te Aupōuri descent, the Incorporation itself is not an iwi organisation. It was explained that the Incorporation was there to speak for shareholders and not an entire iwi.

- 4. THAT** shareholders endorse the Pārengarenga Incorporation Takutai Moana application for Customary Title and that we continue to pursue the application and work with Te Runanga Nui o Te Aupōuri Trust.

Moved by Chad Paraone

Seconded by Heta Conrad

Carried

For 39 Against 12



5. THAT the Chairman's annual report of 2017 be adopted.

Moved by John Tahana

Seconded by Duncan Kapa

Carried

Audited Accounts

6. THAT the combined Pārengarenga A Incorporation and Pārengarenga B3C Trust audited accounts for the year ending 30 June 2017 be adopted.

Moved by John Tahana

Seconded by Heta Conrad

Carried

Appointment of Auditor and Share Valuer

7. THAT PKF Francis Aickin Limited Chartered Accountants of Kaitia be retained as Auditors for the Pārengarenga A Incorporation for the 2017/2018 financial year.

Moved by Clayton Wiki

Seconded by Jane Tahana-Allan

Carried

8. THAT BDO Northland, Chartered Accountants of Kerikeri be appointed Share Valuers for the Pārengarenga A Incorporation for the 2017/2018 financial year.

Moved by Ngainanga Kapa

Seconded by Maringinoa Woods

Carried

Election of Members to the Management

There are two positions available and three eligible nominated candidates, those being Pereniki Conrad, Clayton Wiki and Kingi Wiki.

9. THAT Josephine Howearth is hereby appointed as the Returning Officer.

Moved by Ngainanga Kapa

Seconded by Rosie Conrad

Carried

10. THAT Rangimarie Rameka and Celine Matiu are hereby appointed as Scrutineers

Moved by Winiata Brown

Seconded by Nicola Karna

Carried

The results of the election of members to the management committee are:

Clayton Wiki	32 votes
Pereniki Conrad	23 votes
Kingi Wiki	15 votes

The Chairperson declared that Clayton Wiki and Pereniki Conrad are appointed as Committee of Management members for Pārengarenga Incorporation.

There were concerns regarding the low number of votes returned and the high number of invalid votes received. The committee members agreed that this was a concern and would be looking into these matters.

General Business

Te Pua Reserve - There were concerns from shareholders regarding access to both Te Pua and Pārengarenga Harbour.

Previously shareholders had directed the Incorporation to block access to all commercial fishermen, but recreational fishing had never been addressed. Access to Te Pua is granted by keys being made available at the Te Kao Local Store. The store owner explained that it isn't an easy job for shop staff to distinguish who are commercial fishermen and how many people are gaining access from one key.

There were on-going concerns from shareholders regarding the lack of facilities available at Te Pua. It had been explained earlier that the Incorporation was undertaking major conservation work including planting around waterways and the harbour in order to reduce runoff from farms and forest and yet there was no plan in place to reduce address the lack of toilets at Te Pua despite the number of campers there on an annual basis.

The Incorporation agreed that this is a major concern and that they will have to look into this matter further. It was suggested that until the Incorporation is able to come up with a process on how to manage the access to Te Pua that shareholders will be happy with that they would look into uplifting all keys from the shop.

It was agreed that access to the harbour was a community issue and that a hui should be called between both the Te Kao and Te Hapua communities to create a working party to address the management of the harbour.

Bluff Access - There was a discussion around the access to the bluff. For many years there has been access to the bluff via Te Ahu Road through a gate on the Kaipo whanau land and then onto Pārengarenga forest roads. The Kaipo whanau had explained that this access was an agreement between the whanau and the Incorporation and this was only meant to be a temporary. They also explained that the traffic over the years have increased and people access the gates at all times of the day and night. The Incorporation explained that it was the right of any whanau to make decisions on their own land.

A representative from the Subritzky whanau spoke to the hui and explained that they would be willing to look at access through their land. There were concerns raised regarding having to use private land to access the bluff. It was explained that the Incorporation should be looking at access through their own land and not relying on private land owners.

Mutton - Shareholders questioned the inconsistent availability of mutton to shareholders. It was explained that shareholders will be able to purchase one mutton per shareholder household over the Christmas period.

Setting of the next Annual General Meeting Date and Closing

11. THAT the date be set down for Saturday 24th November 2018.

Moved by John Tahana

Seconded by Heta Conrad

Carried

Mihi: Chad Paraone

Closing Karakia: Joe Everitt

Meeting finished: 2.50 pm



Chairman's Report 2018

Te Rīpota o te Heamana

E rau rangatira mā, tēnā rā koutou katoa.

2017-18 was another busy year for Pārengarenga Incorporation, with its fair share of opportunities, challenges and change. On balance, it has been a good year – from both a financial and development perspective. We ended the year with the finances in good shape and have undertaken a lot more analysis and sifting through options throughout the year as we push forward with the farming, forestry and apiculture businesses.



“...continued growth in our net assets and cash flow is enabling us to explore, invest and develop the business. We've set ourselves a goal of distributing \$1million every year to our shareholders and local community by 2030...”

Mr Chad Paraone, Committee of Management - Chairman

As well as navigating personnel changes and adoption of new approaches, we've continued investigation of exciting new innovations, including in the biochar space, and committed more resource to growing our health & safety, business development, and local employment.

Financial *Pūtea*

I am pleased to report that the Incorporation made an overall net profit after tax of \$1.42 million for the 2017/18 year, and that our Balance sheet has strengthened, with net assets increasing to \$65 million, up from \$52 million the previous year.

These results reflect good performance from the farm (Pārengarenga Station), the sale of our remaining carbon credits, and an increase in the value of our Pārengarenga forest.

Pārengarenga Station delivered a net profit before taxation of \$1.36 million (a significant improvement over the \$532,000 profit achieved the previous year), for which the entire farm team and advisors should be congratulated.

We have also built up cash in the bank, giving ourselves the ability to explore and develop new opportunities and ventures – including on-farm developments, forestry operations, apiculture, biochar and the like.

A consolidated set of accounts are provided in this AGM book. A copy of the full set of accounts are available to Pārengarenga shareholders through the office.

Strategic Direction

We undertook a strategic review in March 2018 and re-affirmed the long-term direction and goals set the previous year. There was a change to the 'Big Hairy Audacious Goal' we set ourselves. It is now much more specific to shareholders and the local community:

“By 2030, we will give back to our community \$1million every year [earned by selling our premium brands to the world]”.

Don't worry, we will deliver financial benefits to shareholders much sooner than that! This is simply stating the scale of our longer-term ambition. Our 3-year goals and annual plan have been shaped to deliver on this goal. This means we've got to successfully grow our farming and forestry businesses, as well as our interest in beekeeping, horticulture and tourism.

Forestry *Ngahere*

Progress with our forestry plans was slower than we hoped, but we are in good shape. We initiated harvesting of the woodlots across the farm, which were planted many years ago as windbreaks and shelterbelts. This provided an additional source of revenue to meet other forestry costs. We are partway through that programme, which has delivered a positive cashflow. It will continue over the next summer and will be followed up with further plantings of Mānuka and other natives.



“...our direct involvement with harvesting and marketing the farm woodlots, plus the windbreak investigations, has grown our forestry management experience and puts us in a good position to grow our own operations...”

Mr Rihari Wiki, Committee of Management - Forestry

During the year, we completed our forest estate modelling work and established some additional accessways into the windbreak zone that runs up alongside the Pārengarenga forest (on the west coast). We canvassed several domestic market customers and initiated supply and pricing discussions in readiness for access to



thinnings and harvested wood from this forest. That work has provided a solid foundation for us to now move forward with our own forestry operations.

We started the year with a new Forestry Manager, a role which did not work out for us, so we re-shaped the approach and are now pursuing a second option, which includes the potential to bring those thinning and harvesting operations in-house (as a more cost-effective approach).

Farming *Pāmu*

We bid farewell to Duanne Golley and whānau during the year, after many years of dedicated service to the Incorporation (he has turned his eye to helping Te Roroa with their beef farming operation). A re-jigged farm team saw our senior farm staff step up and embrace greater responsibilities and a team approach in the management and operation of the farm. The results speak for themselves. Our stock have done well, a direct tribute to the capability of our farm staff.

The farm team spent a good part of the year assessing its performance against industry standards and identifying opportunities for “best use of land”. This has been an interesting start for our journey. Throughout the year, we completed a significant soil sampling/testing programme across the farm and have analysed the current capability of our soil and pasture. The development of a drainage plan for a major part of Steamers Point is a direct result of that analysis, with more to come.



“...our senior farm staff have really stepped up in leading Pārengarenga Station operations. Combined with insight from the ‘best use of land’ work and our extensive soil testing programme, we’re well placed to advance our farming business...”

Mr Pereniki Conrad, Committee of Management – Farming.

Much of the farm land taken up in gullies and catchment areas has been planted out in Mānuka and we will continue this strategy as part of our intention to trap any sediment or nutrient run off from our lands and as part of our cross-sector farming developments (i.e. progressing multiple initiatives on the same farm land).

Generally speaking, market pricing for beef and lamb remain relatively buoyant and at this stage we have no immediate concerns about any short to medium term change. The tender system we adopted the previous year for purchases and sales has served us well. We will continue to farm Angus/Charolais beef, Friesen Bulls and Texel/Dorsett sheep.

We remain connected with the Te Hiku Red Meat Farming collaboration and the Extension 350 programme, which aims to help improve farm performance, although our prime focus has been on analysing our best use of land and options to date.

Apiculture (bees) *Miere*

Our relationship continued with Kauri Park Nurseries Ltd, in terms of growing our Mānuka plantings, increasing hives on our land, and growing our bee-keeping knowledge. Phyllis Kapa is pivotal in her role as our very own beekeeper and will see her work grow along with the additional 220,000 mānuka trees we planted in 2018 (a total of 320,000 planted in the last 2 years). The plantings boost our efforts to protect water quality and increase our opportunities around bees, honey and so forth. This year we were able to get more hives on the ground (380), growing this new revenue stream for the Incorporation.



“...we are growing our in-house knowledge and exceeding targets on trees planted and hives placed, a great start in this new business area...”

Mr Clayton Wiki, Committee of Management – Business Development

Other *Ērā Atu*

Our investigations continued into the opportunities offered from producing and using **biochar** from our waste pine wood. We’ve delved deeper into this area and are excited by the potential benefits to our soil structures, reduction of traditional fertiliser use for biochar-based alternatives, and resulting water quality improvements. On the strength of the learnings to date, we have committed to moving to a small-scale testing programme over the coming year assisted by AgResearch, Callaghan Innovation and Scion, three of New Zealand’s leading research institutions.

The **share register amalgamation** process is still awaiting sign off from the Maori Land Court. Unfortunately, the passing of Judge Ambler, who was handling our case, has delayed the process even more. We continue to press for action from the Court.

Our application for recognition of the foreshore and seabed interests of Pārengarenga shareholders and associated iwi has not progressed far, as the Crown/High Court work through the process across all 300 **Takutai Moana** applications. An initial High Court case management conference was held in June this year. We expect the next round of conferences will not take place until June next year.



In closing, I would like to once again thank the committee of management for the time and commitment made by each to the Incorporation throughout the year. Special thanks to Allie Wiki, Ngainanga Kapa and Pereniki Conrad for being there on the ground and putting in the extra time and effort. A big thanks to Jon Brough, our GM, who has wrestled with the challenges and brought a discipline and greater degree of analytical grunt to the Incorporation game. Under Jon's management, we've been able to extract greater value from our current asset base this past year and gear Pārengarenga for the next stage of growth.

There are others in the community who have contributed to the Incorporation, and we are grateful for your support.

To the farm team, Phyllis, Gillian and Nik in office, Angela and the BDO team, and our other business partners and advisors, e mihi

ana ki a koutou katoa. Thank you for your efforts and backing throughout 2017/18. Finally, it is a pleasure to welcome both Maria Wiki (Business Development Supervisor) and Mike Wikitera (Workplace Supervisor – Health & Safety /Training) to the team, bringing a focus on these critical areas for the Incorporation.

Nō reira, e tātou mā, I trust this report gives you confidence in the performance and direction of your Incorporation and welcome all shareholders to the AGM. Nau mai, haere mai ki tō tatou hui-a-tau, a te 24 Nōema, ki Pōtahi Marae, Te Kao.

Nāku iti noa,

Chad Paraone, Chairman



Liaison *Takawaenga*

Ngainanga is passionate about our tamariki and building a bright future for them. She continues to explore all sorts of opportunities to assist them with their education.

Ngainanga Kapa



Policy and Procedure *Kaupapa Here me Nga Tikanga*

Maahia has been leading the charge on behalf of the Committee of Management with the assessment of various Policies and Procedures. This has been a necessary step for us to ensure we have operational excellence in everything that we do.

Maahia Nathan



Tourism *Tāpoi*

Harry has been working quietly in the background on a few basic concepts for our tourism model. Some of these we will be exploring further this year.

Harry Kapa



Statistics

Tatauranga



5691
Cattle



11,155
Sheep



220,000 (2018)
Native trees planted



4,900
Hectares in forest



380
Hives



3,600
Shareholders



Financial Summary

Whakarāpopototanga o Ngā Pūtea

Pārengarenga Incorporation

For the year ended 30 June 2018

The following pages provide a consolidated statement of financial performance for Pārengarenga Incorporation and its subsidiaries for the year ended 30 June 2018.

[A full copy of the audited accounts is available from the Pārengarenga Incorporation office.](#)



Local people Natasha Wati and Tutangiara Nathan hard at work planting mānuka as part of the growth in our bee sector.



Consolidated Summary Financial Statements

Pūrongo Pūtea

Pārengarenga Incorporation For The Year Ended 30 June 2018	2018	2017
Income		
Beef Cattle, Sheep & Wool Gross Profit	3,574,850	2,800,769
Other Income	938,191	176,459
Non Cash Income	1,024,161	325,625
Total Income	5,537,202	3,302,854
Gross profit	5,537,202	3,302,854
Direct expenses		
Farm Working Expenses	727,039	819,487
Apiculture Expenses	203,208	-
Forestry Expenses	792,447	18,392
Repairs & Maintenance	199,600	305,382
Vehicle Expenses	206,555	152,087
Staff Expenses	1,050,720	929,590
Administration Expenses	340,387	262,457
Standing Charges	332,590	524,459
Non Cash Expenses	267,289	274,477
Total Direct Expenses	4,119,836	3,286,331
Net profit (loss) from trading before taxation	1,417,366	16,522
Less Taxation		
Taxation	(84)	(29,761)
Total Less Taxation	(84)	(29,761)
Net profit (loss) for the year after taxation	1,417,282	(13,238)

Consolidated Statement of Movements in Equity

Pārengarenga Incorporation For The Year Ended 30 June 2018	2018	2017
Equity		
Profit/(loss) for the Period	1,417,282	(13,238)
Asset Revaluation	11,218,432	14,042,841
Movement in Reserves	-	-
Equity at Beginning of Year	52,486,397	38,456,795
Equity at End of Year	65,122,112	52,303,934
made up of:	-	-
Equity Attributable to Owners	65,476,968	52,656,179
Portion Attributable to Minority Interest	(354,856)	(352,245)



Consolidated Balance Sheet

Ripanga Kaute

Pārengarenga Incorporation

As at 30 June 2018

30 JUN 2018

30 JUN 2017

Assets

Current assets

Cash and short-term deposits	1,616,972	485,514
GST receivable	19,764	93,228
Accounts Receivable	51,371	22,299
Livestock on Hand	7,308,914	6,625,918
Prepayments	20,377	14,801
Taxation	51,910	22,591
Total Current assets	9,069,308	7,264,351

Non current assets

Property, plant and equipment	25,059,086	24,144,332
Investments	289,055	289,055
Intangible Assets	-	2,888
Tree Crop at Valuation - A Inc	31,833,000	20,859,000
Total Non current assets	57,181,141	46,295,275

Total Assets

66,250,450

53,559,626

Liabilities

Current liabilities

Trade Accounts Payable	327,488	248,673
Hire Purchase - Current Portion	-	23,706
Total Current assets	327,488	272,379

Non current liabilities

Te Tumu Paeroa - Share Purchase	800,850	800,850
Total Non current liabilities	800,850	800,850
Total Liabilities	1,128,338	1,073,229

Net assets

65,122,112

52,486,397

Equity

Retained earnings	19,238,515	18,842,568
Capital Reserves	3,068,130	2,044,183
Asset Revaluations	43,170,323	31,951,891
Portion Attributable to Minority Interest	(354,856)	(352,245)
Total Equity	65,122,112	52,486,397



Notes to the Consolidated Financial Statements

Pārongo Pūtea Panui

Pārengarenga Incorporation

For the year ended 30 June 2018

1. Statement of Accounting Policies

Reporting entity

Pārengarenga Incorporation (“the group”) comprises of Pārengarenga B3C Trust, Pārengarenga A Incorporation and its subsidiary Pārengarenga Fishfarm Limited. Pārengarenga A Incorporation and Pārengarenga B3C Trust are Maori incorporations established under Te Ture Whenua Maori Act 1993. The group holds a 96.71% interest in Pārengarenga Fishfarm Limited being a limited liability company established under the Companies Act 1993.

Basis of preparation

These consolidated financial statements have been prepared in accordance with Special Purpose Framework for use by For-Profit Entities (SPFR for FPEs) published by the New Zealand Institute of Chartered Accountants. The Trustees/Directors have determined that this is the most appropriate reporting framework. They are a for-profit entity, not required under legislation or constitution to prepare general purpose financial reports therefore are eligible to elect to apply the NZICA special purpose framework.

The financial statements have been prepared for:

- the entity's owners;
- Inland Revenue; and
- the entity's financiers.

Nature of business

The incorporation is engaged in Farming / Leasing / Forestry. The nature of the incorporation's business has not changed during the year under review.

Historical cost

These consolidated financial statements have been prepared on a historical cost basis, except for certain assets which have been revalued as identified in specific accounting policies below. Reliance is placed on the fact that the business is a going concern.

Accrual accounting is used to recognise expenses and revenue when they occur.

Changes in accounting policies

There have been no changes in accounting policies. All accounting policies have been applied on bases consistent with those used previous years.

Accounts receivable

Accounts receivable are stated at expected realisable value, after providing against debts where collection is doubtful. Bad debts are written off during the period in which they are identified. Included in the accounts receivable is an amount of \$1,350 relating to Licences to Occupy that has been long outstanding. The Trustees are still continuing to pursue the repayment of this debt.

Revenue recognition

Revenue is measured at the fair value of the consideration received or receivable for the sale of goods and services, to the extent it is probable that the economic benefits will flow to the incorporation and revenue can be reliably measured.

Sales of goods and livestock are recognised when the entity has transferred the significant risk and rewards associated with ownership of goods to the customer.

Lease income is recognised on a straight line basis over the life of the lease.

Forestry income is recognised on sale or harvest of the forest.

Interest received is recognised as interest accrues, gross of refundable tax credits received.

Dividends received are recognised on receipt, net of nonrefundable tax credits.

Government grants are recognised as revenue on receipt where no performance conditions have been specified on receipt of the grant.

Royalty revenue is recognised on receipt.

Livestock

Livestock is measured at Herd & NSC values as issued by Inland Revenue. Change in Herd Scheme Value gains and losses are recognised in the livestock revaluation reserve. If the revaluation reserve has a deficit for a type of livestock, that deficit is recognised in the Statement of Profit or Loss in the period that it arises. Any revaluation surplus that reverses previous revaluation deficits in subsequent periods is recognised as revenue in the Statement of Profit or Loss. The gains or losses due to livestock number changes are recorded directly in the Statement of Profit or Loss.

Functional currency

The financial statements are presented in New Zealand dollars (NZ\$) and all values are rounded to the nearest NZ\$, except where otherwise indicated.



Investments

Whakangao

Investments in subsidiaries are recognised at the lower of cost or net asset backing. Increases in fair value are recognised in the asset revaluation reserve, decreases in fair value are recognised in the asset revaluation reserve to the extent that there is a reserve balance in relation to the asset. If the fair value of the asset falls below cost this is recorded as an impairment in the profit and loss.

Shares have been revalued to current market values.

	Quantity	Cost	Year Purchased	Market Value
Balance Agri-Nutrients	32,097	\$193,038	1997-2008	\$259,986
SFF Ltd - Ordinary	33,694	\$47,117	2009-2010	\$17,521
Farmlands	11,548	\$11,548	1997-2010	\$11,548

Issue Capital	2018	2017
1,146,766 ordinary shares, fully paid (2017: 1,146,766)	32,345,456	32,345,456
3,261,000 ordinary shares, fully paid (2017: 3,261,000)	4,465,716	4,465,716

Financial instruments

Ngā Hohoko Pūtea

Financial Assets

At initial recognition the incorporation determines the classification of financial assets as either held at fair value, cost or amortised cost. Financial assets are initially measured at fair value, estimated at the transaction price less any associated transaction costs.

Amortised cost

Amortised cost includes assets where the incorporation intends to earn contractual cash flows in the nature of principal and interest payments. Such assets are carried at amortised cost using the effective interest method. Gains and losses are recognised in profit or loss when the assets are derecognised or impaired, as well as through the amortisation process.

Cost

Equity instruments are classified as held at cost. Assets are stated at cost less any accumulated impairment loss. Gains and losses are recognised in profit or loss when the assets are derecognised or impaired.

Fair value

Financial assets not held at amortised value or cost are held at fair value and include financial derivatives such as forward contracts and interest rate swaps. Assets are subsequently measured at fair value only when the fair value of the instrument can be reliably measured based on a quoted price for an identical asset in an active market. Where no active market price is available the instrument shall be measured at prior year's fair value less any accumulated impairment loss.

Increases in fair value are recognised in the asset revaluation reserve, decreases in fair value are recognised in the asset revaluation reserve to the extent that there is a reserve balance in relation to the asset. If the fair value of the asset falls below cost this is recorded as an impairment in the profit and loss.

Financial Liabilities

Financial liabilities, including borrowings and bank overdrafts, are initially measured at fair value net of transaction costs and are subsequently measured at amortised cost using the effective interest method.

Interest expenses are recognised in profit or loss on an effective yield basis.

Intangible Assets

Intangible assets include ETS carbon credits and are carried at cost.

Exceptional items

Exceptional items are large income and/or expense items that do not arise as a result of normal business operations and are not expected to recur. Exceptional items are disclosed separately in the statement of profit or loss where the total value exceeds 5% of revenue.

Goods and services tax

The financial statements are stated exclusive of goods and services tax (GST) except for accounts receivable and accounts payable, which are stated inclusive of GST. The entity is group registered for goods and services tax (GST).

Comparative figures

The comparative figures shown are for a twelve month period.



Property, Plant & Equipment

Property, plant and equipment are stated at historical cost less any accumulated depreciation and impairment losses. Depreciation is provided at the maximum rates permitted by the Income Tax Act 2007.

Land and Buildings vested to Pārengarenga A Incorporation under the Te Ture Whenua Maori Act 1993 have been revalued to the Government valuation dated 2017 as specifically allowed by the NZICA SPFR standards. The transfer of the land as freehold property is for a total land area of approximately 6.248 hectares, with the date of transfer (with no consideration) being 14 March 1965. Valuations take place with intervals no greater than 5 years.

Depreciation is calculated on a diminishing value basis over the estimated useful life of the asset using depreciation rates published by Inland Revenue. Assets estimated useful life is reassessed annually. The following estimated depreciation rates/useful lives have been used:

Buildings	0-30%	diminishing value
Development	3-20%	diminishing value
Land	0%	diminishing value
Office Equipment	18-60%	diminishing value
Plant & Equipment	8-67%	diminishing value
Vehicles	18-36%	diminishing value

Land vested to the Pārengarenga B3C Trust under the Te Ture Whenua Maori Act 1993 has been revalued to the government valuation dated 2017. The transfer of the land as freehold property is for a total land area of approximately 9,842 hectares, with the date of transfer (with no consideration) being 16 August 1991. The total land area relating to the B3C freehold farms (included in the above) is 5,805 hectares. The Maori Land Court has approved the portioning out to approximately 257.7 hectares known as Ngatekawa included in the above total.

Buildings transferred from the Maori Trustee (1992) have been valued at their 1992 insurance indemnity value less depreciation. Allowance has been made for the revaluation of improvements to the valuation dated 2017.

The total pastoral area of Pārengarenga B3C Trust is 4,288 hectares, and has a valuation (2017) of \$13,900,000.

Exceptional items

Exceptional items are large income and/or expense items that do not arise as a result of normal business operations and are not expected to recur. Exceptional items are disclosed separately in the statement of profit or loss where the total value exceeds 5% of revenue.

Goods and services tax

The financial statements are stated exclusive of goods and services tax (GST) except for accounts receivable and accounts payable, which are stated inclusive of GST. The entity is group registered for goods and services tax (GST).

Comparative figures

The comparative figures shown are for a twelve month period.

2. Prior Period Adjustment

The impairment of Fishfarm assets in 2017 was not eliminated on consolidation (refer note 12). This had the following effect: Impairment expense overstated \$182,463 in 2017 and assets understated \$182,463 in 2017.



Murray Larsen, our Workshop mechanic, taking care of the needs of our vehicles, excavator and equipment to help keep our operations running smoothly.



Pārengarenga A Incorporation's Share Valuation

Ngā Hea Wāriu o Pārengarenga A Inc

Statement Pursuant To Section 278(4) Of
Te Ture Whenua Maori Act 1993

The Pārengarenga A Incorporation valuation includes the net assets of:

(i) Forestry & Leasing

The valuation has been prepared on the net asset position in the audited financial statements as at 30 June 2018.

Asset Valuation

The method of valuation of fixed assets is as follows:

- (a) **Land & Improvements** – 2017 government valuations
- (b) **Other fixed assets** (including plant) – cost less accumulated depreciation
- (c) **Tree crop valuation** – independent market value undertaken as at 30 June 2018

Share Valuation

Pārengarenga A Incorporation	\$34,138,268
Total Net Assets	\$34,138,268
Number of Shares	3,261,000
Net Assets per Share	\$10.46
Value Per Share	\$10.46



Pārengarenga B3C Trust's Share Valuation

Ngā Hea Wāriū o Pārengarenga B3C

Statement Pursuant To Section 278(4) Of Te Ture Whenua Maori Act 1993

The Pārengarenga B3C Trust valuation includes the net assets of:

(ii) **Forestry Leasing and Royalties**

(iii) **Farming Operations**

The valuation has been prepared on the net asset position in the audited financial statements as at 30 June 2018.

Asset Valuation

The method of valuation of fixed assets is as follows:

(d) **Land & Improvements** – 2017 government valuation

(e) **Buildings** – 2017 government valuation less accumulated depreciation

(f) **Other fixed assets (including plant)** – cost less accumulated depreciation

Livestock has been valued at the 2018 National Average Market Values released by the Inland Revenue.

Share Valuation

Pārengarenga B3C Trust	\$30,983,844
Less: Livestock Closing Values (NSC)	(\$1,504,270)
Plus Livestock Closing Values (NAMV)	\$2,633,095
Total Net Assets	\$32,112,669
Number of Shares	1,146,766
Net Assets per Share	\$28.00
Value Per Share	\$28.00

It must be recognised there are special factors governing the Pārengarenga Incorporation share values as there are several restrictions on the selling, purchasing and transfer of shares in Maori Incorporations (Section 264 and 268 of Te Ture Whenua Maori Act 1993).

Yours faithfully

A Edwards BBS C.A.
Share Valuer

Dated: 24th October 2018



Vision *Tirohanga Whāioio*

A compelling glimpse of the future

Vision Statement

He Umanga Māori nō te whenua me te moana, e rongonuitia ana huri noa te ao. E whakapakari ana i tō tātou iwi, me ngā hapori, me te waihanga noki i tetahi huarahi e anga mua ai ngā iwi o Te Hiku o te Ika.

A world class business of the land and sea, growing our people and communities, shaping the future of the Far North.

Core Purpose *Te Aronga*

Pārengarenga

He Puna Oranga

E rahi e!

Serving our wellbeing to the world.

Core Values *Ngākau Pono*

- **Te Pono ki te kaupapa** integrity
- **Te ū ki te kaupapa** professionalism
- **Manaakitanga** showing respect, generosity and care for others
- **Rangatiratanga** chieftainship, ownership,
- **Wairuatanga** spirituality
- **Kotahitanga** unity, togetherness, solidarity, collective action
- **Pūkengatanga** teaching, preserving and creating Māori knowledge
- **Kaitiakitanga** guardianship, stewardship, trusteeship

Big Hairy Audacious Goal (BHAG)

Tiro Tawhiti

By 2030, we will give back to our community \$1m every year [earned by selling our premium brands to the world].

3 Year Goals

- **Maximise the profit potential of the existing businesses in Farming and Forestry.**
- **Set up a fully functioning, profitable Apiculture business.**
- **Complete a business plan for all Incorporation business sectors operating in our rohe.**



Key Capabilities *Ngā Aheitanga*

Farm	Forestry	Apiculture
Use of technology, farm management	Research and Development on optimisation	Starting from scratch
Enhanced water care	OSH	Threat management
Pasture improvement	Contract management	Feasibility study
Soil expertise	Consistent wood quality	JV management
Genetic improvement	Logging strategy	Hive management
General upskilling of workers	Pruning and thinning	General training
Environmental management	Relationship management	
Good advisory expertise	Species management	
Relationship management	Collaboration with iwi on processing and roading	
Animal welfare	General upskilling and training	
OSH	By-product management	

Key Capabilities *Ngā Aheitanga*

Aquaculture	Tourism	Entire Incorporation
Feasibility study (ensure no clash with tourism)	Hospitality	Research on next business streams
Network with NZ industry	Market research	Governance – resource allocation and data management
Regulatory affairs	Network/relationship management	Organisational structure
NZTE – expert	Collaboration and JVs	Environmental management
Facilities management	Year-round facilities	Permanent office
Energy management	MICE	History/back story/ brand development
Nutrition	Site optimisation	OSH management
Species analysis and end use	R&D – feasibility studies	Technology management
	Activities – JVs	
	Roading - Council	



Can you help please? We would appreciate current contact details for the following shareholders. Thank you

ABRAHAM	Wiki Tangara	BROWN	Terence Thomas	ELLIS	Robert James
ABRAHAM/APERAHAMA	Robert	BROWN	Tracey Lee	ELLIS	Samuel David
ADAMS (NEE PIRINI)	Rosie	BROWN	William Henare	EMMS	Natalie Jane Horiana
AGER	Lisa	BROWN/PARAONE	Frederick	ENOKA (NEE WIKI TE WHAI)	Te Rina
AGER	Maureen	BROWN/PARAONE	Heni Keremete	EPERE	Isaac
AGER	Peter	BROWN/PARAONE	John Henare	EPERE	William
AKUHATA	Haki	BROWN/PARAONE	Laquita Ngamoko	ERIHA/KIRIWI (NEE RAHARUHI)	Ngamoni
ANANIA	Hone Wi	BROWN/PARAONE	Netana	ERIHA/WAATA	Ngarui
ANANIA	Ihaperu Wi	BROWNLEE (NEE MACKEN)	Eva	ERIHE	Kere
ANANIA	Rina Wi	BUCKLEY (NEE NOBLE)	Betty	ERIHE	Rawiri
ANANIA (MRS DIXON)	Meri Wi	BUSBY	Menata Les	ERIHE	Tawio
ANARU/ANDERSON	Hohepa/Joseph	BUSBY	Raiha Kiri	ERIHE	Te Rore
ANDERSON	Edwin Kaaka	BUSBY	Weia William	ERIHE	Tini
ANDERSON	Huhana Waimatao Simone	BUTLER	Adrian Taupaki Andrew	ERU	Eru
ANDERSON	Iratumoana Robin	BUTLER	Tyrone Cody Te Rarawa	ERU	Whiti
ANDERSON	Manaea Haenga Huhana	CAMERON	Lillian	ERUERA	Raroa
ANDERSON	Merania Herapeka Robin	CAMERON	Martha	ERUETI	Pereiha
ANDERSON	Te Kooti	CAMPBELL (NEE PIRINI)	Riparata	ETANA	Michael
ANDERSON	Stanley Kenneth (I)	CANDERLE (NEE MURRAY)	Marara/Marie	ETANA	Rikihana (Jnr)
ANDERSON	Te Kooti Robin Hudson	CASSIDY	Jason Aldo Justin	ETANA	Wiki
ANDERSON (NEE POUAKA/BOX)	Jennifer Maria	CASSIDY (NEE HARRIS)	Vicky	ETERA	Etera Topine
ANDERSON (NEE POUAKA/BOX)	June Ramarihi	CASSIDY (NEE KEM)	Joyce Terahari	EVERITT	John Jnr
ANDREW	Bryan Lawrence	CHADWICK (NEE HEKA)	Ann Bunny	EVERITT (NEE HETA)	Tiripua
APERAHAMA	Helen Aroha Rangimarie	CHERRINGTON (NEE MURRAY)	Geena	FARKOS (NEE CLARK)	Dolly
APERAHAMA	Henare Karaihe	CLARK	Lucy	FARLEY	Grace
APERAHAMA	Herora	CLARK (LIFE INTEREST)	Marjorie	FARRINGTON (NEE NEHO)	Gladys Maata
APERAHAMA	Katene	CLARK (NEE MACKEN)	Ellen	FAULKNER (NEE KEMP)	Elizabeth
APERAHAMA	Manawa	CLARK (NEE TOHU)	Ema Katie Rihari (Karen Tuwhakaea)	FITZSIMMONS	Robert John
APERAHAMA	Pai Rewi	CLARKE	Annie June	FITZSIMMONS	Sidney Henry
APERAHAMA	Rewi	CLARKE	Ariana Leigh Huia	FLETCHER	Adrian
APERAHAMA	Taukiri Rewi	CLARKE	Christopher	FLETCHER	Camilla
APERAHAMA	Tepora	CLARKE	Douglas	FORD	John
APERAHAMA	Toka Rewi	CLARKE	Helen	GARNER	Ralph David
APERAHAMA (NEE WAITAI)	Raiha	CLARKE	Lorraine	GRAHAM (NEE TIPENE)	Rita
APERAHAMA/ABRAHAM	Hone Rewi	CLARKE	Phillip	GRAHAM/KEREHOMA	Reweti Wi
APERAHAMA/ABRAHAM	Papu	CLARKE	Rochelle	GRAHAM/KEREHOMA	Tare Wi
APERAHAMA/ABRAHAM	Te Ngara Rewi	CLOTHIER (NEE HAYWARD)	Helen Maise Ngaire	GRAHAM/KEREHOMA	Tata Wi
APERAHAMA/ABRAHAM	Whetu Tangara	COLEMAN	Joey (Junior)	GRAHAM/KEREHOMA	Wi
APERAHAMA/WITANGA	Raniera	COLEMAN	Maria	GRANT	Rex
APORO (NEE TOHU)	Hemoata	COLEMAN	Simon	GRANT	William
ARAMA	Reece Wiremu	COLEMAN	Waimana	GRANT (MRS HARDY)	Raiha
ARANO	Huria/Julia Neke	COLEMAN	Walter Jnr	GROVES (NEE MARSDEN)	Matilda Ina
ARANO	Joanna	COLLINGSON (NEE WIKI)	Aue	HAAR (NEE NEWLAND)	Kathleen
ARONA	Rora Neke	COLLINS (NEE NATHAN)	Ere Takutaimoana	HAawe	Pewi
ARONA	Werahiko Tokowha	COMER	Mary	HAawe	Takerei
ARONA	Whito	COPE (MRS PAUL)	Agnes	HAIGH	Earl
ATAMA	Ahinoama	CORBETT (NEE TE RORE)	Miriama	HAIGH	Glenda
ATAMA	Hare Hare	COSTELLO (NEE TAHU)	Jane Athalone	HAIMONA	Ngarimu
ATAMA	Hohaia I	CROSS	Munro Wayne	HAKARAIA	Hoterene Wiremu
ATAMA	Ira Hare	CURTIS (NEE DENNY)	Maggie	HAKARAIA	Kaitoa
ATAMA	Kere Hare	DANGAN	Jolene	HAKARAIA	Paiwaina Wiremu
ATAMA	Mata Hare	DANGAN	David Charles	HAKARAIA	Raiha
ATAMA/ADAMS	Haukaikino	DAVIES (NEE GRANT)	Matekitawhiti Martha	HAKARAIA	Rawiri Wiremu
ATAMA/ADAMS	Hohaia II	DAVIES (NEE TWADDELL)	Isobella Jane	HAKARAIA (MRS KEREHOMA/GRAHAM)	Ngawini Wiremu
ATAMA/ADAMS	Matire	DAVIS	Gladwyn Rama	HAKARAIA (MRS MURRAY)	Keeti Wiremu
AUGUST	Kahu Irene	DAVIS	Trevor	HAKOPA/ANARU	Ngatote
AUGUST	Rangi John	DAVIS (NEE WIKITERA)	Celia Margaret	HAKOPA/ANARU	Wi
AWARAU/RIVERS	Henare Kaio Hakaraia	DENNY	Edward	HAMI	Wini Marama Peri
AWARAU/RIVERS (MRS KARIPIA)	Tepora Kaio Hakaraia	DENNY	Fanny	HAMI	Winiata
AWARAU/RIVERS (MRS LOWERY)	Tuoi Kaio Hakaraia	DENNY	Patrick	HAMI/TE PANA	Kiri
BEATHEN (NEE BROUGHTON)	Emerly	DENNY (MRS ARCHIBALD)	Mary	HAMI/TE PANA	Rutu
BIDDLE	Naika Pania	DERBYSHIRE	Elizabeth	HAMI/TE PANA	Tiaki
BIDDLE	Rihari Matthew Chance	DUDLEY	Brian	HAMI/TE PANA (MRS LAZARUS)	Hau
BIDDLE (NEE ANDERSON)	Pania	DUDLEY	Hilton	HAMIORA/SAMUELS	Reweti
BIRSTON (NEE RUPAPERA)	Hauanu Wiro	DUNN	Andrew Paki	HAMO	Kere Mio
BOX/POUAKA	John/Hone Armstrong	DUNN	Brian	HAMO	Kura Mio
BOYD	Fanny	DUNN	Fred	HAMO	Raureti Mio
BOYD	Matekino	DUNN	Joseph Richard	HAMUERA (HEIWARI/HAYWARD)	Haare/Charles
BOYD (NEE MACKEN)	Minnie	DUNN	Kevin John	HAPAKUKU	Hiri Himi
BRAY (NEE WELLS)	Pirihira	DUNN	Lindsey/Lindsay	HAPAKUKU	Te Okena
BROOKING (NEE MURRAY)	Taara/Daisy	DUNN	Malcolm	HAPETA	Hone Himu
BROUGHTON	Barbara	DUNN	Phillip	HAPI	Douglas Takaha
BROUGHTON	Christine	DUNN	Selwyn Anthony Harry	HARAWIRA	Heta
BROUGHTON	Josie	DUNN	Sheryn	HARAWIRA	Tane
BROUGHTON	Katrina	DUNN	Thalia	HARAWIRA	Tarati/Tareti
BROUGHTON	Lester	DUNN	Wendy	HARAWIRA	Tiini
BROUGHTON	Neil	DUNN	William	HARAWIRA	Unaiki Tarati
BROUGHTON	Patrick	DUNN (MRS CRIGHTON)	Zanna Desmae Joy	HARAWIRA (MRS LAUGHLAND)	Freda Puhi
BROUGHTON (MRS TEAWA)	Christina	DUNN (NEE HARRIS)	Maudie	HARAWIRA/HADFIELD	Himi
BROUGHTON (NEE TAHANA)	Isabella Anne Patricia	EDDISHAW	Evelyn	HARE	Ruihi Tipene
BROWN	Albert Gregory	EDDISHAW	Karen	HARE	Tame Tipene
BROWN	Anthony George	EDDISHAW	Maria	HARE	Te Wiki Tipene
BROWN	Dianne	EDWARDS (NEE DENNY)	Mata/Martha	HARE WI	Heta
BROWN	John	EDWARDS (NEE JOB)	Maki	HARE/RAHARUHI (MRS CONRAD)	Ngaro
BROWN	Joseph	ELDER (NEE BOWMAN)	Alma Ina		
BROWN	Sharon	ELLIS	Graeme Robert		
		ELLIS	Moana Lea		
		ELLIS	Peter Stewart		



Can you help please? We would appreciate current contact details for the following shareholders. Thank you

HARE/RAHARUHI (MRS PETRICEVICH)	Makereta	HENARE	Hetaraka	HOBSON (NEE MACKEN)	Polly
HARIHONA/BARBER	Hauhau/Hauhau	HENARE	Horomona	HOBSON/HOPIHANA	Huirua Heremaia
HARIHONA/BARBER	Meri	HENARE	Kevin	HOERA	Pene
HARIHONA/BARBER	Onerahi	HENARE	Kuini Wikitahi	HOHAIA (NEE TAHU)	Angeline Tangihaere
HARIHONA/BARBER	Penetira	HENARE	Leslie	HOHEA	Wikitera
HARIHONA/BARBER	Tete	HENARE	Mamae Wikitahi	HOHEPA	Hemo
HARIHONA/BARBER	Turuhira	HENARE	Matehaere	HOHEPA	Hoani
HARIHONA/BARBER	Waata	HENARE	Nicola	HOHEPA	Kiriora
HARIHONA/BARBER	Wiha	HENARE	Pere Riwhi	HOHEPA	Maki
HAROWE	Mamae	HENARE	Pua Wiremu	HOHEPA	Paekoraha
HAROWE	Mereana	HENARE	Ramari Wiremu	HOHEPA	Rangitahi
HARRIS	Adam	HENARE	Rangimarie Wiremu	HOHEPA	Rhipa Keita
HARRIS	Bobby	HENARE	Raureti	HOHEPA	Waata
HARRIS	Frank	HENARE	Sam	HOHEPA (RUPAPER)	Joseph
HARRIS	Hehi	HENARE	Te Wera Wikitahi	HOHIPA	Kaa
HARRIS	Henry	HENARE	Tiopira Hauri	HOHIPA	Maraea
HARRIS	Jimmy	HENARE	Waiwhariki Hauri	HOKAI	Mere
HARRIS	Johnny	HENARE	Winiata	HOKAI	Meri
HARRIS	Joseph	HENARE (HETARAKA)	Moihi	HOKIANGA (LIFE INTEREST)	Seamon Waimoana Joseph
HARRIS	Ken	HENARE (NEE STEPHENS)	Aroha Rose	HOLLAND (NEE KOKO)	Teresa Maria
HARRIS	Nopera	HENARE (PUKU)	Miriama	HOLLOWAY	Elsie
HARRIS	Paraire	HENARE PENE	Taimania	HONE	Matu
HARRIS	Stanaway James (Jnr)	HENARE/POPATA (MRS TOPI)	Tuhiata	HONE	Mereana
HARRIS	Stanaway Taniwai Hare (Snr)	HENARE/POPATA (MRS WIKI)	Manawa Te Wai	HONE	Motu Kiwi
HARRIS (MRS HEREWINI)	Waana	HENARE-PAKO (NEE NEHO)	Dawn Elisebeth	HONE (NEE HAPAKUKU)	Marara
HARRIS (NEE KEMP)	Betty	HENRIKSON (NEE TURNER)	Jacqueline Teina Kore	HONE (NEE HUI)	Tare Wirinia
HARRIS (NEE LUNDON)	Hoki	HEPA (NEE TE WIROA)	Peata	HONE/HAKU	Tame
HARRISON	Ngawini	HEPARA/PERI (NEE WAIPOURI)	Raiha Te Oranoa	HONE/HAKU	Wirihana
HARRISON (MRS HERBERT)	Bernadette	HERANGI	Wiri	HONE/HAKU (MRS KOHA)	Winika
HAWKINGS (NEE ELLIS)	Alyson Betty	HERBERT	Barry	HONE/MATI (NEE WAAKA)	Kararaina Miraka Onekapua Wiremu
HAYES (NEE HETA)	Nora Hare	HERBERT	Henry	HONE/TEPANIA (MRS CLARK)	Makarena
HEEKI	Emere	HERBERT	James	HONE/TEPANIA (NEE PETERA)	Ngahiraka
HEEKI	Henare	HERBERT	Raymond	HONE/WIKI (MRS RUPAPER)	Mate Wiremu
HEEKI	Rahera	HERBERT	Tairu	HONETANA (MRS JOHNSTON)	Haromi
HEEKI PENE	Taituha	HERBERT (NEE RUPAPER)	Miraka Hohepa	HOPIHANA	Hohepa Heremaia
HEEKI PENE	Te Hapi	HERBERT/HEREPETE	Henare Waha Hotu	HOPIHANA	Tiakiriri
HEIWARI (METE)	Tiopira	HERBERT/HEREPETE	Hone/John Hotu	HORI	Raumati
HEIWARI METE (MRS HODGKINSON)	Mereana Paora	HERBERT/HEREPETE	Huria	HORI	Rorana
HEIWARI METE (MRS RUDOLPH)	Kare Paora	HERBERT/HEREPETE	John	HORNE	Haley Claudia
HEIWARI METE (MRS WAIPOURI)	Akinihi	HERBERT/HEREPETE	Te Irimate	HORNE	James Julien
HEIWARI METE/SMITH	Hone Haki Paora	HERBERT/HEREPETE	Te Waha	HORNE	Stephen Clarence
HEIWARI METE/SMITH	Ruihi Paora	HERBERT/HEREPETE (MRS PETERA)	Timoti	HOTERE	Ellen/Erana Pate Mane
HEIWARI METE/SMITH	Wiremu Paora	HERBERT/HEREPETE (MRS PETERA)	Huria Hohi/Hotu	HOTERE	Harata Mane
HEIWARI METE/SMITH II	Wiremu Paora	HEREMAIA	Frank Ware	HOTERE	Hira Mane
HEIWARI/METE (MRS MURRAY)	Marara	HEREMAIA	Nikora Joseph	HOTERE	Mererina Mane
HEKA	Herepete Ngaromutu	HEREPETE/HERBERT	Bunkall	HOTERE	William
HEKA	Meinata Ngaromutu	HEREPETE/MATENGA	Noki	HUBBARD	George
HEKA	Michael Charles	HEREWAKA (NEE HETARAKA)	Pakahi	HUDSON	Merepohoi
HEKA	Milly Miri Miri	HEREWINI	Henare	HUDSON	Tane Keith
HEKA	Nuku Ngaromutu	HEREWINI (HEIWARI METE)	Hetaraka Raiha	HUI	Hare Hemi
HEKA	Rihari Tohu	HEREWINI/SELWYN	Hone	HUI	Hera Hemi
HEKA	Starbright Whetu	HERORA	Hohepa	HUIHUI (NEE PEIHOPA)	Olive
HEKA	Te Arama Ngaromutu	HETA	Ani Hare	HUINGA	Cliff
HEKA	Yvette Rachel	HETA	Ani Ngawini	HUINGA	Darryl
HEKA (MRS KITE)	Waiheke Ngaromutu	HETA	Benjamin Hare	HUINGA	Elizabeth
HEKA (NEE RAWIRI)	Erina	HETA	Iwa Paraire	HUINGA	Jim
HEKEUA/HACK (NEE RUPAPER)	Matekino Maria	HETA	Iwi Joy Paraire	HUINGA	Katy
HEMI	Akinihi	HETA	Matene	HUINGA	Michael
HEMI	Anarina	HETA	Matene Paraire	HUINGA (MRS TE NAMU)	Ropaina Laupina
HEMI	Ani Peri	HETA	Piriote Hare	HUIRAMA	Tepana
HEMI	Aranga Peri	HETA	Tuka Hare	HUIRUA	Hinemoana Huhana
HEMI	Brendon	HETA	Wiremu Hare	HUIRUA	Hinemoana Huhana II
HEMI	Daryl	HETARAKA	Hetaraka Henare	HUIRUA	Lana Jessie
HEMI	Haki	HETARAKA	Rapi Rapi	HUIRUA	Redmond Eruera
HEMI	Hemi Peri	HETARAKA	Renata Timoti	HUIRUA	Riini James
HEMI	Judy	HIKO	Himiona	HUIRUA	Riini James II
HEMI	Lisa	HIMI	Hohepa	HUIRUA	Valentine Maxine
HEMI	Matire	HIMI (MRS WHARAI)	Ani	HUNIA	Aperahama
HEMI	Peti Peri	HIMI (NEE RAHARUHI)	Maru	HURA	Matu
HEMI	Rahiri	HIRA	Pauha	HURA	Mihipati
HEMI	Rangimurua	HIRINI	Desmond	HURU	Hemana Hare
HEMI	Toma	HIRINI	Murray	HURU	Heni Hare
HEMI (MRS TAMAHO)	Kino	HIRINI	Robert	HURU	Karena Hare
HEMI MANUERA (NEE HEIWARI)	Hera	HIRIWA/SYLVA	Rapi Mehaka	HURU	Kino Hare
HEMI/JAMES	Wiremu Peri	HIRIWA/SYLVA	Rauna Mehaka	HURU	Kiriwai Hare
HENARE	Aomarama Wiremu	HIRIWA/SYLVA	Wi Mehaka	HURU	Mereana Hare
HENARE	Ata Wikitahi	HIRIWA/SYLVA	Wiki Rehurangi Mehaka	HURU	Pomana Hare
HENARE	Desmond	HOANI	Penenaia	HURU (NEE WAAKA)	Kiri Maihi
HENARE	Fiona	HOANI (NEE WAENGA)	Kate	IHAKA	Atama
HENARE	Hamihana Wikitahi	HOANI TIWHI	Te Wehi	IHAKA	Bella
HENARE	Heke Wiremu	HOANI TIWHI (MRS KARIPA)	Harata	IHAKA	Heta Manuera
HENARE	Henare Wikitahi	HOANI TIWHI (MRS RUSSELL)	Kataraina	IHAKA	Irihapeti Manuera
HENARE	Henare Wiremu			IHAKA	John Beechman
				IHAKA	Kingi
				IHAKA	Maurice Edwin
				IHAKA	Michael



Can you help please? We would appreciate current contact details for the following shareholders. Thank you

IHAKA	Murimotu
IHAKA	Paenga
IHAKA	Peter
IHAKA	Ricky
IHAKA	Rimini Manuera
IHAKA	Te Huia Kylie
IHAKA	Wiremu Manuera
IHAKA (MRS RATANA TAMAHO)	Amiria
IKANUI (NEE RAPANA)	Mate
IRAIA	Rapine
JAMES	Catherine Jemima
JAMES	Stanely/Stanley
JANUARY (NEE HICKS)	Tiffaney Rose
JOB	Ani
JOB	Henry
JOB	Joseph
JOB	Robert
JOB	Wiremu
JOB (NEE ROGERS)	Marjorie
JOE (NEE KEEFE)	Rora Waiwera
JOHNSON (NEE KEM)	Mary
JOHNSON (ROGERS)	Debbie
JONES (NEE YATES)	Ngahua
JORGENSON (NEE NORMAN)	Eliza Hone
KAACA	David Henry
KAACA	Keita Rangimaria Michelle
KAACA	Wiremu Conrad
KAACA	Wiremu Puru A
KAACA	Kikopu Lindberg
KAACA (MRS KEMSLEY)	Marama Leigh
KAACA (NEE WAAKA)	Ngaro Te Huia Waha
KAACA/FISHER	Hare Mete Ikanui Hupata
KAACA/FISHER	Hera Ikanui Hupata
KAACA/FISHER	Karena Ikanui Hupata
KAACA/FISHER	Meretiki Ikanui Hupata
KAACA/FISHER	Natanahira Ikanui Hupata
KAACA/FISHER	Rapana Ikanui Hupata
KAACA/FISHER	Rapata Ikanui Hupata
KAACA/FISHER (MRS KONI)	Hapaira Ikanui Hupata
KAACA/FISHER (MRS WAITOHI)	Keita Ikanui Hupata
KAACA/FISHER (MRS WALTERS)	Hiria Ikanui Hupata
KAIO	Hona Wihongi
KAIO	Ma Wihongi
KAIO	Mihiawa
KAIO	Peti Wihongi
KAIO	Te Mami Wihongi
KAIO	Te Rina Wihongi
KAIO	Winika
KAIPARA (NEE JOHN)	Moearoha
KAIPO (MRS WALDEN)	Mariameno Patricia Karena
KAIRAIHI (NEE RAHARUHI)	Ani Pene
KAMARIERA	Hui Aroha
KAMARIERA	Sonny
KAMARIERA	Unaiki/Esther
KAMARIERA	Wiremu/William John
KAMARIERA (MRS WALL)	Ururauo Wire
KAMIRA	Hiki
KAMIRA	Himiona Tupakihi
KAMIRA	Karu Ngawati
KAMIRA	Karu Tupakihi
KAMIRA	Pirihira Tupakihi
KAMIRA (MRS MARTIN)	Raiha Tupakihi
KAMIRA (MRS SMITH)	Harata Tupakihi
KAMIRA (NEE WAIPOURI)	Rena Karu
KANARA (MRS BROWN)	Mei Bibi
KANARA (MRS HENARE)	Rewa Hoera
KANARA/CONRAD	Piri
KANARA/CONRAD (MRS MELVILLE)	Pera Hoera
KAPA	Ani Taumatangi
KAPA	Matiu Emile
KAPA	Ngapine Hemi
KAPA	Paea Mutu
KAPA	Percy Ihaka
KAPA	Remaria Horomona
KAPA	Tutangiora Piripi
KAPA	Waata
KAPA (MRS OTENE)	Maringinoa Maima Lee
KAPA (MRS TURNER)	Ruiha Pihopa
KAPA/REWETI PAEPAE	Kararaina Ngarui
KAPA/REWETI PAEPAE	Kataraina Ngarui
KARAKA	Georgina Sophie Dolly
KARAKA	Hemi Rutene
KARAKA	Mere
KARAKA	Rehuta Rutene
KARAKA	Tamamoko Hakaraia
KARAKA	Wiremu Waha Hakaraia

KARENA	Alicia
KARENA	Aokarere
KARENA	Herbert
KARENA	Ihaka
KARENA	Jessie
KARENA	Nigel
KARENA	Rangi
KARENA	Simon Subritzky
KARENA	Te Ao
KARENA	Theo
KARENA	Waru
KARENA (NEE HIRINI)	Gloria
KARENA/PENE	Henare
KARENA/PENE	Ngakura
KARENA/PENE	Taimania
KARETU (NEE WELLS)	Janie Te Tai
KAUKASI (NEE PHILIPS)	Sheila
KAWANA (MRS NOPERA)	Paea
KAWEKA (MRS SHEPHERD)	Pirihira Pio
KEARNS	Kuini
KEEFE	John Howard
KEEFE	Roger Rangi
KEEPA	Titore
KEEPA HORO (KEMP)	Ihaka
KEEPA/WIKI (NEE HEMI)	Riri Umuroa
KELLY (NEE KEREHOMA)	Arohanui Ono Ngahiraka
KEM	Pikiteora
KEM	William
KEMP	Henry
KEMP	Huhana
KEMP	Matthew
KEMP	Rauna
KEMP	Thomas Subritzky
KEOGH	James Roy
KEOGH	John Martin
KEOGH	Margaret
KEOGH	Mary Agnes
KEPA/HILL (NEE NATHAN)	Arohanoa
KEREAMA	Alfred
KEREAMA	Henare Mei
KEREAMA	Hera Mei
KEREAMA	Heringa Mei
KEREAMA	Wiremu Mei
KEREAMA/HEREMAIA	Hariata Mei/Wiremu
KEREAMA/PERI	Meri Mei or Meri Ritete
KEREHOMA	Karani Reweti
KEREHOMA	Katerina
KEREHOMA	Mereana Reweti
KEREHOMA	Miriama Reweti
KEREHOMA	Nopera Wi
KEREHOMA	Tamatiti Reweti
KEREHOMA (MRS KEEPA)	Te Paea
KEREHOMA./GRAHAM	Riria Wi
KEREHOMA/GRAHAM (MRS WALTERS)	Mata Reweti
KEREOPA	Eri
KEREOPA	Merunga
KEREOPA	Takuira
KERETA	Ratareria
KING (NEE PETRICEVICH)	Merle Elaine
KINGI	Betty
KINGI	Fanny
KINGI	James Tauhuni
KINGI	Kahi Waenga
KINGI	Kataraina
KINGI	Pani
KINGI	Ripeka
KINGI	Robin
KINGI	Rori Kuini
KINGI	Tauhinu (I)
KINGI	Tauhinu (II)
KINGI	Te Wau Ngatikahu
KINGI	Tukapongia
KINGI (NEE LAZARUS)	Heeni
KIRIWI/GREAVES	Matekino Heta
KIRIWI/GREAVES (MRS WALDEN)	Mau Heta
KITTO (NEE PIRINI)	Matilda Margaret
KIWIKIWI (NEE KAIPO)	Kathleen
KOKO	Desmond Dominique
KOKO	Godfrey Hohepa
KOKO	James Chanel
KOKO	Mavis Arian Bernadette
KOKO	Ruiha
KOKO	Shane Patrick
KOMENE	Hare Hohepa
KOMENE	Hare Wiremu
KOMENE	Hohipa
KOMENE	Maata Hohepa
KOMENE	Neri Hohepa

KOMENE	Piki Hohepa
KOMENE	Rewi Hohepa
KOMENE	Riria Wiremu
KOMENE	Tutua
KOMENE (MRS TAHU)	Kiritina Wiremu
KOMENE MANIHERA	Maki
KOMENE/TIPENE	Miriama Mereana
KOMENE/TIPENE	Pehimana Mereana
KOONEY/COONEY (NEE BROUGHTON)	Sarah
KOROHEKE	Megan Frances
KUREI (NEE STEPHENS)	Elizabeth Maude
LAZARUS	Ellen Barbara Josephine
LAZARUS	Frank
LAZARUS	Sybil
LAZARUS (MRS SPICER)	Rosie Pinia
LAZARUS (NEE TWADDELL)	Elizabeth
LAZARUS/RAHARUHI	Pinia
LEE (NEE NEWLAND)	Heather
LEEF	Cecilia
LEEF	George
LEEF	Gordon
LEEF	Huia
LEEF	Jarret Mikahere
LEEF	Maria
LEEF	Mehaka
LEEF	Melanie Jean
LEEF	Michael
LEEF	Norman
LEEF	Sydney
LEEF	Tangi
LEEF	Walter
LUCKY (NEE INNES)	Michelle
LUM	Hemaima
LONDON	Mathew
LONDON	Sarah
MAAKA	Kaio
MAAKA	Winika
MAAKO/PIVAC	Heiri/Sadie
MAAKO/PIVAC	Te Paea
MACKIE (NEE WAIPOURI)	Maryanne
MAIHI	Hakuene
MAIHI/MARSH	Hariata
MAIHI/MARSH	Heumate
MAIKA/MCMATH	Eruera Arthur Wiremu
MAIKA/MCMATH	Reihana Wiremu
MAIKA/MCMATH	Takinui Wiremu
MAKENE	Rere o Kapuni Hoera
MAKITANARA (MRS MORTIMER)	Akete Haki
MAKIWHARA/MAXWELL	Tamaki
MANE	Pipi
MANE/TAUA	Puti
MANGA (NEE GLYNAN)	Susan
MANGA (NEE SIMEON)	Kathleen Marianne
MANIHERA	Eruera Komene
MANIHERA	Hakopa Komene
MANIHERA	Harata Komene
MANIHERA	Maihi Komene
MANUEL	Arthur
MANUEL	Edward
MANUEL	George
MANUEL	Henry
MANUEL	June
MANUEL	Kathleen
MANUEL	Liza
MANUERA	Hemi Taitimu
MANUERA	Houwai
MANUERA	Rawhiti Tasman Hemi (Jnr)
MANUERA	Rui Meri
MANUERA WAATA	Hemi
MANUERA WAATA	Hemi Kingi Taitimu (Snr)
MANUERA/MARE	Rawhiti Ngawaka Tame (Senior)
MARARA	Wiha
MARE	Hami Tame
MARE/MURRAY	Heta Hone
MARE/MURRAY	Manawa Karaihe
MARE/MURRAY	Mereana
MARE/MURRAY	Mitikakau Ruihi
MARE/MURRAY (MRS WALTERS)	Pare/Polly Karaihe
MARE/MURRAY (MRS WELLS)	Ngaronoa/Norah Karaihe
MARINO	Hare
MARINO	Herepete
MARINO	Timoti
MARINO	Tiopira
MARINO	Wiremu
MARSDEN	Brett Logan
MARSDEN	Debbie

**Can you help please? We would appreciate current contact details for the following shareholders. Thank you**

MARSDEN	Edwin Paul	MIRU	Dione Kirt	NEWLAND	Stanley
MARSDEN	Herbert Robert	MITA	Te Maha	NEWLAND	Stephen
MARSDEN	Kerry	MOHI	Ena Pohe	NEWLAND	Wayne
MARSDEN	Kim	MOHI	Hemi Pohe	NEWSOME	Faye
MARSDEN	Leonee	MOHI	Henare Pohe	NGAKURU/BARBER	Maraea
MARSDEN (MRS CRISTINELLI)	Trudy	MOHI	Mereana Pohe	NGAKURU/BARBER	Mihi
MARSDEN (MRS ROBINSON)	Bridgett/Bridgette	MOHI	Roharima Pohe	NGAKURU/BARBER	Puru
MARSH	Conrad	MOIHI	Hemana	NGAKURU/BARBER	Tamati
MARSH	Ralph	MOIHI	Hori	NGAKURU/BARBER	Wairua
MARSH	Sarah	MOKENA	Haki	NGAKURU/BARBER	Whare
MARSH	Sonya	MOSESE (NEE STEPHENS)	Gloria	NGAKURU/BARBER (MRS COOK)	Kirihaupapa
MARSH	Victor	MOTETE	Tini Hami	NGANIHO	Amiria
MARSH	Viola	MURDOCH (NEE MURRAY)	Ellen	NGAPINE	Hukatere
MARSH	Mita Clifford	MURRAY	Alan Gerald	NGAPINE	Te Huhu
MARSH (NEE RUPAPERA)	Hemoata	MURRAY	Belinda	NGARAMA	Kahu Haami
MARSH/MAIHI	Rapata Tame	MURRAY	Borradale	NGARAMA	Marino
MARTIN	Fletcher	MURRAY	Craig Nopera Panakareao	NGARAMA	Matire Hami
MARTIN	George	MURRAY	Eddie	NGARAMA	Mere Hami
MARTLEW	June	MURRAY	Florence Haimona	NGARAMA	Neri Haami
MARTLEW	Shirley	MURRAY	George Hayward	NGARAMA	Ngawaiata
MARUPO	Riria	MURRAY	George Martin	NGARAMA	Paraone Hami
MARUPO (MRS SUBRITZKY)	Ewhe	MURRAY	Glass	NGARAMA	Tamati Hori Hami
MASTERS	Hector Herbert Poihipi	MURRAY	Herepete Hone	NGARAMA	Whakaruru Hami
MASTERS (MRS GIBSON)	Huria Herbert	MURRAY	Hirikia Tuakana	NGARAMA (MRS GREGORY)	Taingaehe Hami
MATCHITT (NEE MURRAY)	Dorothy	MURRAY	Jodie	NGARAMA (NEE RAPIHANA)	Matire Hami
MATENE	Iwi	MURRAY	Kerewai Hori	NGAWAKA	Tamaho Parore
MATENGA	Kataraina Herepete	MURRAY	Marshall	NGAWAKA (NEE GRANT)	Harriet
MATENGA	Wiremu	MURRAY	Mary Ann	NGAWAKA (NEE GRANT)	Ripene Jane
MATHEWS/MATTHEWS (NEE SCHRAMM)	Betty	MURRAY	Nicholas Sam	NGAWAKA (NEE MARE)	Ngahemo
MATINI	Tane	MURRAY	Paddy/Paare	NGAWATI (NEE ETANA)	Mary
MATIU	Anna Louise	MURRAY	Paraone Tuakana	NGAWIKI	Erihi
MATIU	Gabriel	MURRAY	Raiha	NGAWIKI	Mei
MATIU	Kato	MURRAY	Rangi Tuakana	NGAWIKI	Mereana Tamati
MATIU	Manuera	MURRAY	Roberta Rihi Waiarangi	NGAWIKI	Noema
MATIU	Mikahere	MURRAY	Steven/Stephen David	NGAWIKI	Puti
MATIU	Niha	MURRAY	Thomas	NOBLE	Ani
MATIU	Patana Raniera	MURRAY	Thomas Hayward	NOBLE	Arthur Warrin
MATIU	Rawiri	MURRAY	Waata Hohepa	NOBLE	Colleen
MATIU	Reihana	MURRAY (MRS ALLMAN)	Kararaina Haimona	NOBLE	Eddy
MATIU	Rihari	MURRAY (MRS FORD)	Rosie	NOBLE	Harry
MATIU	Wi Tamihana	MURRAY (MRS HOBSON)	Te Paea Hone	NOBLE	Harvey Arnold
MATIU (NEE WIKI)	Amokura	MURRAY (MRS SNOWDEN)	Meriana Rose	NOBLE	Huia
MATIU/MATTHEWS	Jane	MURRAY (MRS WRIGHT)	Ramari Hone	NOBLE	Martha
MATIU/MATTHEWS	Jessie	MURRAY (NEE BUTLER)	Lesley	NOBLE	Peter
MATIU/MATTHEWS	Michael	MURRAY (NEE GRAHAM)	Waimirirangi	NOBLE (NEE PIRINI)	Kathleen
MATIU/MATTHEWS	Tane	MURRAY (NEE NATHAN)	Rangimarie	NOBLE/NOPERA (NEE TAHANA)	Margaret Marie Mary
MATTHEWS	Selwyn	MURRAY (NEE RUDOLPH)	Iris Ripene	NOPERA	Ngatu Ngakuru
MATUTINOVICH	John Leslie	MURRAY/MARE	Hirini Tuakana	NOPERA	Te Hira Henare
MATUTINOVICH (ESTATE OF)	Dennis William	MURRAY/MARE	Hita Karaihe	NOPERA (MRS ABRAHAM)	Kiritina Himi
MATUTINOVICH (NEE BERGHAN)	Yvonne May	MURRAY/MARE	Hohepa/Joseph Tame	NOPERA (MRS CASSIDY)	Waikiokapua Iehu
MAUAHARA	Erana Taipari	MURU	David Lawrence	NOPERA/NOBLE	Heremaia Henare
MAXWELL	Bracken Dean Hori	MURU	Joanne	NORMAN	Kerehi
MAXWELL (MRS MAXWELL-BUTLER)	Zaelene Rona	MURU	Michael	NORMAN	Thomas John
MCDONALD/MAKITANARA	Erina	MURUPAENGA	Annie	NUKU (NEE WAIPOURI)	Maraea
MCDONALD/MAKITANARA (NEE WIKI)	Mereana	MURUPAENGA	Barbara Kiri	NUTANA	Hariata Hoani
MCPHERSON	Doris	MURUPAENGA	Hami Jnr	NUTANA	Hori Hoani
MCPHERSON	Karen	MURUPAENGA	Lizzie	NUTANA	Riki Hoani
MCPHERSON	Ken	MURUPAENGA	Mana	NUTANA	Wiremu Hoani
MCPHERSON	Rhonda	MURUPAENGA	Murupaenga	OGILVY	Caroline Te Aroha
MCPHERSON (NEE RAWHITI)	Miriam	MURUPAENGA	Paki	ONEROA	Celine Michelle
MEHANA	Mereana (II)	MURUPAENGA	Paul	ONEROA	James Lawrence
MEHANA	Tame Rupene	MURUPAENGA	Ratahi	ONEROA	Jeannine Lewella
MEHANA	Te Iwa Rupene	MURUPAENGA	Roy (III)	ONEROA	Patricia Rangihurihia
MEHANA	Te Raroa Wi	MURUPAENGA	Ruihi	ONEROA	Shirley Jane
MEHANA	Wharangi Rupene	MURUPAENGA	Shane Paki	ONEROA	Tina Marie
MEHANA/TE RAU	Mautini Mihiarangi	NAERA	Wiki	ONEROA MAHIMA	Joseph Horima
METE	Pewi Paora Heiwari	NATANAHIRA (MRS KUPE)	Arapani Witana	ORR	Phillip
METE	Waaka	NATANAHIRA (MRS NEHO)	Puia Witana	ORR	Stephen
METE	Wiremu Paora Heiwari (I)	NATANAHIRA (MRS TAYLOR)	Miriama	ORVISS (NEE EREHI)	Sherry-Anne
METE	Wiremu Paora Heiwari (II)	NATANAHIRA (MRS TAYLOR)	Miriama Henare	OTENE	Mere Tokomauri
METE (MRS HODGKINSON)	Mereana Paora Heiwari	NATANAHIRA (MRS WALTERS)	Marara	OTENE	Mohi Tokomauri
METE/SMITH	Pateriki	NATHAN	Akongga	PAA	Pita
METE/SMITH	Rangihaua Paora Heiwari	NATHAN	Hohia	PAEARA	Kei Roha
METE/SMITH	Ruihi Paora Heiwari	NATHAN	Manuera	PAERATA	Hoani Matenga
MIHAKA	Collin	NEHA (NEE WAIPOURI)	Amelia	PAETAI	Ngapera Wi
MIHAKA	Cyril	NEHO	Brian	PAETAI	Rangi
MIHAKA	Hemi Wiremu	NEHO	Brooke Broughton	PAETAI	Wiremu Hoani
MIHAKA	Jimmy	NEHO	Chube Dean	PAHU	Rihi
MIHAKA	Kapi	NEHO	Dinah	PAIRAMA	Rora
MIHAKA	Marara Wiremu	NEHO	Eric	PAKI	Carol Diane
MIHAKA	Matene	NEHO	Maki	PAKO	Henare
MIHAKA	Matt	NEHO	Robert	PAKO	Henare Taumataiti
MIHAKA	Rangi	NEHO	Robert Lee	PANAU	Huhana
MIHAKA	Ruth	NEHO	Waata	PANEERE (MRS PARATENE HINGA)	Mata
MIRU	Chris Wiremu	NEHO	Waitai	PAPA	Wi
		NEHO	William	PAPA	Te Karupe
		NEHO (MRS LOFFLEY)	Judith	PARAIHE	Emere Haimona
		NELSON (NEE SELWYN)	Mabel		
		NEWLAND	Mark		



Can you help please? We would appreciate current contact details for the following shareholders. Thank you

PARAIHE	Peri	POPATA	Kokori Waha	RAIRA/RYDER (MRS LAZARUS)	Pera Hehi
PARAIHE	Wikatariwi Haimona	POPATA	Matire Henare	RAKENA	Hapeta
PARAIHE	Winika Haimona	POPATA	Mihiao Herora	RAMEKA	Ihaka Aparua
PARANGI	Carl	POPATA	Ngahinu Herora	RAMEKA	Rimutai Hone
PARANGI	Dean	POPATA	Ngakapa Herora	RAMEKA	Tokorangi Hone
PARAONE	Kararaina/Hemoata Hokio	POPATA	Oriwa Herora	RAMEKA	Tuoi
PARAONE	Keopa Hohepa	POPATA	Pai Paki	RAMEKA (NEE MARSDEN)	Mary Noki
PARAONE	Mepara Hohepa	POPATA	Paihana Herora	RANGIUIA	Wiremu
PARAONE	Miraka Mepara Hohepa	POPATA	Pera Herora	RAPANA	Amiria
PARAONE	Paraone Hone	POPATA	Pua Joseph	RAPANA	Hori Rauna
PARAONE	Ranareti Hohepa	POPATA	Raureti Wiremu	RAPANA	Kaimanu
PARAONE	Te Wi Hare	POPATA	Reihana Dickson	RAPANA	Rangitea
PARAONE	Wiremu Hohepa	POPATA	Te Koro	RAPANA (MRS KIRIKAU)	Mereana Rauna
PARATENE	Erana	POPATA	Te Maiti Henare	RAPANA (NEE RAHARUHI)	Dawn Regina
PARKER (NEE MURRAY)	Peggy Agnes	POPATA	Te Onepu Te Piki	RAPATA (MRS TARAMOEROA)	Te Owai
PATANA/NATANAHIRA	Tokotoko	POPATA	Te Tuhi	RAPATA/LEAF (NEE WAIPOURI)	Anataia
PATTERSON (NEE KEMP)	Margaret Rose	POPATA	Te Waha Hare	RAPATA/ROBERTS	Betty Manu
PAUL	Hana Te Ariki Ahere	POPATA	Te Waru Herora	RAPATA/ROBERTS	Karepori Raniera Mare
PAUL (NEE SIMEON)	Edner Marina	POPATA	Wiremu Henare	RAPATA/ROBERTS	Kirihihi Raniera Mare
PAURINI	Peara	POPATA	Wiremu Hone	RAPATA/ROBERTS	Manu Raniera Mare
PAURO (NEE HETARAKA)	Pakahi Merepeaea Herewaka	POPATA (MRS TOBY/TOPI)	Ruhi Henare	RAPATA/ROBERTS	Mereana Raniera Mare
PEARSON (NEE RUPAPERA)	Mereraina Titi	POPATA (MRS WHARANGI)	Moengaroa Himiona	RAPATA/ROBERTS	Ohaki Raniera Mare
PEARSON (NEE STEED)	Erika Maree	POPATA (NEE NGAKAPA TAHU)	Huria	RAPATA/ROBERTS	Piripi Raniera Mare
PEIHOPA	Ana	POPATA (NEE SELWYN)	Rama	RAPATA/ROBERTS	Raiha Raniera Mare
PEIHOPA	Erana	POTAKA-DOWN	Merle	RAPATA/ROBERTS (MRS WAITAI)	Hera Raniera Mare
PEIHOPA	Katarina	POTTER (MRS SMITH)	Elizabeth George	RAPI	Matiu
PEIHOPA	Robert	POU (NEE ELLIS)	Barbara Anne-Jo Charmaine	RAPIHANA/ROBSON	Mareaa Hakiha
PENE	Herora Kiri	POUAKA	John Te Mangoroa	RAPIHANA/ROBSON	Meri Herepete
PENE	Piri Kiri	POUAKA	Merle	RAPIHANA/ROBSON	Meti Oti
PENE	Waireti Kiri	POUAKA/IHAKA	Hapimana	RAPIHANA/ROBSON	Morehu Hakiha
PENE	Waru Kiri	POUAKA/IHAKA	Urimaroa/Maro	RAPIHANA/ROBSON	Ngarama
PENE	Winiata Wiki	POUAKA/IHAKA (MRS DAVIS)	Whena Freda	RAPIHANA/ROBSON	Rangihaukaha Oti
PEREEME	Matiu	POUAKA/IHAKA (MRS FELL)	Erina	RAPIHANA/ROBSON	Rira Herepete
PEREIHIA	Mereana	POVEY	Andrew	RAPIHANA/ROBSON	Ruka Herepete
PERI	Ruhia	POVEY	Ani Kathleen	RAPIHANA/ROBSON	Tautahi Hakiha
PETERA	Dion	POVEY	Constance	RAPIHANA/ROBSON (MRS MANE)	Meinata Hakiha
PETERA	Emily	POVEY	Cyril Myra Hanatoria	RAPIHANA/ROBSON (MRS MARINO)	Ihapera Oti
PETERA	Ernest	POVEY	Darcy	RATA/RYDER (NEE KARENA)	Piurangi
PETERA	Francis	POVEY	Dolly	RATANA	Maata
PETERA	Hone	POVEY	Edward	RATANA	William Hayward
PETERA	Ihapera Piripi	POVEY	Emanuel	RATANA	Adam Anzac
PETERA	Ivy	POVEY	James Frederick	RATANA/HAPAKUKU	Makere
PETERA	Kare Hoto	POVEY	Selwyn Tukotahi	RAUNA/MARE	Rapata
PETERA	Pita	POVEY (MRS MARIASOUCE)	Inutai Kate	RAUNA/MARE (NEE POPATA)	Maki Himiona
PETERA	Rapata Hoto	POVEY (MRS MANSELL)	Nelda Martha	RAWHITI	Bill
PETERA	Tarei Hoto	PROCTOR	Will	RAWIRI	Te Hau
PETERA	Tyrone	PUA/WATENE	Te Rina	RAWIRI	Te Ngo Hau
PETERA	Waitai Ratima	PUHIPI/BUSBY	Akinihi Iehu Timoti	REEWE (MRS TATANA)	Mereana Hori
PETERA (NEE TWADDELL)	Viola Pearl	PUHIPI/BUSBY	Henare Iehu Timoti	REEWE/MURRAY	Moka Hori
PETRICEVICH	Mate/Mati	PUHIPI/BUSBY	Henare Timoti	REEWE/MURRAY	Raroa Hori
PETRICEVICH	Nicholas	PUHIPI/BUSBY	Herewini Iehu Timoti	REEWE/MURRAY	Ruka Hori
PHILLIPS	Eugene	PUHIPI/BUSBY	Mapera Neri	REEWE/MURRAY	Tiki Hori
PIHE	Hone	PUHIPI/BUSBY	Mata Timoti	REEWE/MURRAY	Witana Hori
PIKAAHU	David Raymond	PUHIPI/BUSBY	Mere Haimona Riapo	REID (NEE MACKEN)	Marjorie
PIKARI/PICKERING	Manuera Hunia	PUHIPI/BUSBY	Mere Poroa Timoti	REIHANA	Natanahira
PIO	Hekiera	PUHIPI/BUSBY	Paraire Haimona Riapo	REIHANA	Te Huhu
PIRI	Raiha	PUHIPI/BUSBY	Ponaute Haimona Riapo	REIHANA (NEE TAHU)	Cecilia
PIRIHI (NEE NATHAN)	Pikiteora	PUHIPI/BUSBY	Riapo Haimona Riapo	REMO/PENE (NEE MAIHI)	Mereana Winika
PIRIHIKI/SUBRITZKY	Aata Rapata	PUHIPI/BUSBY	Rihi Timoti	REMUERA (NEE ELLIS)	Ngahuaia Mary
PIRIHIKI/SUBRITZKY	Albert Apiata	PUHIPI/BUSBY (MRS NORMAN/JOB)	Hariata Iehu Timoti	RENETI (NEE TWADDELL)	Julia Dawn
PIRIHIKI/SUBRITZKY	Apiata Rapata	PUHIPI/BUSBY (MRS WOLLAND)	Raiha Haimona Riapo	REPIA	Frank
PIRIHIKI/SUBRITZKY	Haare Rapata	PUKEROA	Paraone Hemi	REWETI	Ani Hare
PIRIHIKI/SUBRITZKY (MRS MACKENZIE)	Beverly Apiata	PUKEROA	Wiki	REWETI	Hamahona Rameka
PIRIHIKI/SUBRITZKY (MRS MILJAK)	Emera Rapata	PUKEROA (NEE MURRAY)	Dolly	REWETI	Harata Rameka
PIRIHIKI/SUBRITZKY (MRS PETERA)	Flora Rapata	PURU (NEE WAIPOURI)	Ngairi Katrina	REWETI	Kingi Hare
PIRIKA/HERBERT	Rae/Ray	PUTETE (NEE POPATA)	Tahanga Himiona	REWETI	Rakapa Rameka
PIRIKA/HERBERT	Tumarae	RAHARUHI	Bruce Lance Scott	REWETI (MRS HETA)	Heeni Kingi
PIRIKA/HERBERT (MRS CURREEN)	Mareaa	RAHARUHI	Erana Moana Jasmine	REWETI/DAVIS	Hohepa Kingi
PIRIKA/HERBERT (MRS TAUTARI)	Arani	RAHARUHI	Hopaia Sophie	REWETI/DAVIS	Te Mamae Kingi
PIRIMONA	Owai	RAHARUHI	Jillaine Rae Jaylene	REWETI/DAVIS	Te Whitu Kingi
PIRINI	Dennis	RAHARUHI	Morris Dale	REWETI/DAVIS	Wikitera Kingi
PIRINI	Hone	RAHARUHI	Rina Umuroa	REWI	Hohepa Hohepa
PIRINI	James Jnr	RAHARUHI	Taituha Hetaraka	REWI	Mereana Hohepa
PIRINI	Kereopa	RAHARUHI (MRS MANE)	Rahera Hare	REWI	Ngareta
PIRINI	Manuel Wiremu	RAHARUHI/IHAIA	Pari	REWI	Pakihau Hone
PIRINI	Mary Anne	RAHARUHI/IHAIA	Piripi	REWI	Rihi Hone
PIRINI	Nicholas Vincent	RAHARUHI/IHAIA	Renata	REYNOLDS (NEE FITZSIMMONS)	Merrilee Frances
PIRINI	William John	RAHARUHI/IHAIA (MRS SHEPHERD)	Kiri	RIAPO	Henri
PIRINI	Wiremu	RAHARUHI/IHAIA (MRS TAU)	Mereraina	RIKIHANA/ETANA (NEE KEEPA)	Ani
POATA	Rachael Anne	RAHARUHI/IHAIA (MRS TAUHARA)	Maki	RIPIA	Hector
POHARAMA	Ngareta Reihana	RAHARUHI/LAZARUS	Hohepa Hare	RITETE	Emeri
POPATA	Hare Rapata	RAHARUHI/LAZARUS	Kare Umuroa	RITETE	Ripine Pirini
POPATA	Hemaima Wikitana				
POPATA	Henare Hare (I)				
POPATA	Henare Hare (II)				
POPATA	Kakaitawhiti				



Can you help please? We would appreciate current contact details for the following shareholders. Thank you

RITETE	Wharemate Pirini
RIVERS	David Hakaraia
RIVERS	Phillip Andrew
RIWAI	Pera
RIWHI (MRS GODINOVICH)	Kahorau
RIWHI (MRS TUKARIRI)	Mata Te Piki
ROBERTS	Christopher
ROBERTS	Francis
ROBERTS	Gabriel
ROBERTS	Lawrence
ROBERTS	Shirley
ROBERTS	Teresa
ROBERTS	Wayne
ROBERTSON (NEE PIRINI)	Pirihira
ROGERS	Agnes Jenny
ROGERS	Edwin
ROGERS	Howard
ROGERS	John
ROGERS (NEE KAIPO)	Mata Te Rua Martha
ROGERS (NEE KEM)	Olga
ROHA	Maata Te Kawau
ROLSTON (NEE HIRINI)	Sharon
RONGOMAI (NEE ELLIS)	Haeata Rangi Apikera Whetu
ROPIHA	Hone
ROPIHA	James
ROPIHA	Joseph
ROPIHA	Mary
ROPIHA	Paul
ROPIHA	Thomas
ROPIHA (MRS VEITCH)	Margaret
RORANA/LAZARUS	Ngapia
RORANA/LAZARUS (MRS COOPER)	Maria
ROYAL (NEE TAHANA)	Emma Helen
RU (NEE RAHARUHI)	Elizabeth Monica
RUDOLPH	Mark Mariu
RUDOLPH	Reihana Wilfred John
RUHA (NEE HARRIS)	Mary
RUIA	Te Ruki
RUKA	Hiria
RUPAPERA	Ihaka
RUPAPERA	Makinihia Hohepa
RUPAPERA	Paora
RUPAPERA	Turei Johns
RUPAPERA	Wiremu Fluff
RUPAPERA	Wiremu Kupa
RUPAPERA (NEE MATIU)	Heni Hami
RURAWHE/RUDOLPH	Pani
RUSDEN (NEE CLARKE)	Elizabeth
RUSSELL	Frederick
RUSSELL	Frederick George
RUSSELL	Johnny
RUSSELL	Keith
RUSSELL	May
RUSSELL	Robert Baden Powell
RUTENE	Mere Karaka
RUTENE	Rapata Karaka
RYAN (NEE NEHO)	Sharon
SANSON (NEE PAKI)	Marama Brown
SCHRAMM	Colin
SCOTT	Roma Sainio
SELWYN	Dan
SELWYN	Eddie
SELWYN	Georgina
SELWYN	Jack
SELWYN	Larkins
SELWYN	Margaret
SELWYN	Mary
SELWYN	Paddy
SELWYN	Pat
SELWYN	Steven
SELWYN	Tirihana
SELWYN/HEREWINI (NEE MURRAY)	Mary Ann/Raiha
SHAW (NEE NORMAN)	Patsy C
SHEPHERD (NEE ROGERS)	Maude
SHEPHERD (NEE SCHRAMM)	Lisa
SHERRIF	Ngaio
SHORTLAND	Marcia/Moana
SIMEON	Arthur Stanley
SIMEON	Reginald Desmond
SIMEON	Robert Tokomauri
SINGH	Manjit
SINGH	Nicholas
SLADE	Hana-Lee
SMITH	David
SMITH	Tira
SMITH (NEE WYNARD)	Anne
SNOWDEN	Nairi

STARK	Clarice
STARK	Douglas John
STARK	Florence Josephine
STARK	Norman
STARK (MRS BRISTOW)	Margaret
STEED	Narissa Jade
STEPHENS	Edward Paul
STEPHENS	Lynne Patrick
STEPHENS	Selwyn David Hone
STEVENS	Earnest Ripia
STEVENS (NEE PIRINI)	Ripeka
STOWERS (NEE PETRICEVICH)	June Marga
SUBRITZKY	Bertha
SUBRITZKY	Edward Robert
SUBRITZKY	George Neho
SUBRITZKY	James
SUBRITZKY	Lena
SUBRITZKY	Lillian
SUBRITZKY	Mary
SUBRITZKY (MRS BARTULOVICH)	Flora Christine
SUBRITZKY (MRS COWEN)	Shontalee Ann
SUBRITZKY (MRS KERR)	Cynthia Eileen
SUBRITZKY (MRS SHARP)	Nere
SUBRITZKY (NEE WIKI)	Parani
SYLVA	Desmond
SYLVA	Isaac
SYLVA	Mona
SYLVA	Pirihira
SYLVA	Tom
TAHANA	Aramiha Waata
TAHANA	Mane Takinui
TAHANA	Ngawini Takinui
TAHANA	Totina Takinui
TAHANA	Tuharoto
TAHITAHAI	Frederick Pereniki
TAHU	Alexander Bollis
TAHU	Anthony Craig
TAHU	Christine
TAHU	Elliott Paki
TAHU	Hemi Piripi
TAHU	Henare Taimona
TAHU	Jason
TAHU	John George
TAHU	Keith
TAHU	Maria
TAHU	Michael
TAHU	Newman Wilson
TAHU	Ngakapa Rameka
TAHU	Pukoro Karena
TAHU	Richard
TAHU	Te Waaka Rameka
TAHU	William
TAHU (MRS FABRIS)	Charlotte
TAIAWARUA	Hare
TAIAWARUA	Herora
TAIPARI	Pere/Perenara Tawhio/Tawio
TAIRAKI/TE RAU	Paora
TAIRAKI/TE RAU	Rahera
TAIRAKI/TE RAU (MRS MANE)	Rakapa
TAITIMU	Haereata H
TAITIMU	Himi
TAITIMU	Peka
TAITIMU	Timi
TAKEREI	Albert Matiu
TAKEREI	Arapeti Matiu
TAKEREI	Haki Matiu
TAKEREI	Harawira Wiki
TAKEREI	Himi Matiu
TAKEREI	Kiri Wiki
TAKEREI	Marara Wiki
TAKEREI	Mihi Reweti Matiu
TAKEREI	Whena Matiu
TAKIMOANA	Rehi
TAMAHO	Ratana
TAMATI	Anamaraea
TAMATI	Eriha Tawio
TAMATI	Ina
TAMATI	Maata Tawio
TAMATI	Maria Tawio
TAMATI	Mereana Ngawiki
TAMATI	Ngapera
TAMATI	Rapata
TAMATI	Rawi
TAMATI	Riana Ngawiki
TAMATI	Rirena Ngawiki
TAMATI	Tamati Tawio

TAMATI	Tame Tawio
TAMATI	Waipouri
TANA	Ihapera
TANA	Mere
TANGI (NEE PEIHOPA)	Peia
TANGOHAU (NEE BROWN)	Joanne
TANIERA	Hare
TANIERE	Hohaia
TANIWHA (NEE TIPENE)	Caroline
TAPU (NEE WAIPOURI)	Mabel
TAREI	Riria
TATANA	Hare
TAUA	Hoani Wiremu
TAUA	Wiremu Hone
TAUA (MRS HEREWINI)	Parehua Wiremu
TAUMANU	Linda
TAUMANU	Peter
TAUMATAITI/HETARAKA	Karena
TAURERE	Hohepa Rapine
TAURERE	Kiripounamu
TAURERE	Makoare Rapine
TAURERE	Ngareta
TAURERE	Ngawini
TAURERE	Piri Rapine
TAURERE	Rapine Makoare
TAURERE	Rapine Rapine
TAURERE	Whereri
TAURERE	Keni-Jack
TAURERE (MRS NOPERA)	Matire Rapine
TAURIKI (NEE SYLVA)	Elizabeth
TAVITA (NEE BROWN/NORMAN)	Netawai M
TAWHARA/TAWHATA (NEE MURRAY)	Emma Florence
TAWHITI	August
TAWHITI	Desmond
TAWHITI	Grant
TAWHITI	Ileene
TAWHITI	Steve
TAWHITI	Taru
TAWHITI (MRS KUKA)	Sonia
TAWHITI (MRS TAIKATO)	Marge
TAWHITI (MRS TAYLOR)	Loma
TAYLOR	Werahiko Ivan
TE AHO (NEE KEEFE)	Martha Lovie
TE AMO	Heterewika
TE AMO	Wiremu
TE AWA	Lloyd
TE AWA	Sonny
TE AWA (MRS SIMMONDS)	Hokimate Hemi
TE AWA/HEKE (NEE HEREPETE)	Maraea
TE HORO	Ihutai
TE HORO	Titaha
TE HUUH	Peri
TE HUIA	Mere
TE IHUTAI	Rawiri
TE KANI (NEE NEHO)	Beverley
TE KURI	Hira
TE MARU	Matini Hami
TE NGARA	Ani
TE NGARA (MRS TAWIO)	Mei Himi
TE PAA	Jade Puhipi Dunn
TE PAA	Kaipuke Waata
TE PAA	Rawinia Wiki
TE PAA	Selwyn Dunn
TE PAA	Te Pana Waata
TE PANA	Hami
TE PANA	Mihipati
TE PANA	Nutana
TE PANA	Rua Hami
TE PAPA	Riki Hone
TE PAPA	Roka Hone
TE PAPA	Te Pana Hone
TE RAU	Te Ararora Waitohi
TE RORE	Ruki
TE TEIRA	Rapine M
TE WI	Miraka
TEPANIA	Aterea Maaka
TEPANIA	Haki Maaka
TEPANIA	Hone
TEPANIA	Ihaperu Maaka
TEPANIA	Maata
TEPANIA	Maata Maaka
TEPANIA	Makarini Maaka
TEPANIA	Maraea Maaka
TEPANIA	Marihi Maaka
TEPANIA	Nganihinihi Maaka
TEPANIA	Ripeka
TEPANIA	Ripeka Maaka



Can you help please? We would appreciate current contact details for the following shareholders. Thank you

TEPANIA	Tame Maaka	WAAKA	Erana	WHANAU TRUST	Maurice Morehu Tawhiti
TEPANIA	Werahiko William Maaka	WAAKA	Hamuera	WHANAU TRUST	Moengaroa Rameka Kotahitanga
TERE (NEE HUI)	Patari	WAAKA	Hariata	WHANAU TRUST	Paapu & Parae Mete
TEREWI	Rachel	WAAKA	Hoani Hami	WHANAU TRUST	Pene Karena Paora
TERIAKI (NEE POUAKA/BOX)	Rachael	WAAKA	Hopa Hami	WHANAU TRUST	Pene Tipene
THOMAS	Robin	WAAKA	Kokori	WHANAU TRUST	Rhoda Hinetekai Smith
THOMPSON	Maggie Turuturu	WAAKA	Matire	WHANAU TRUST	Tana/Apikera
THOMPSON	Poti	WAAKA	Miriama Neri	WHANAU TRUST	Tare Teri Romana
THOMPSON	Melody Anne	WAAKA	Peri Hami	WHANAU TRUST	Taukiri Me Purewa Kerehoma
THOMPSON (NEE WAIPOURI)	Iris Cecelia	WAAKA	Tawaka	WHANAU TRUST	Te Whanau O Hopa Rorana
TIUWHI	Paku Hoani	WAAKA	Te Wehi Rapihana	WHANAU TRUST	Terehia McMath
TIPENE	Eruera	WAAKA	Tutemaewa Rapihana	WHANAU TRUST	Tui Ina Hearne
TIPENE	Kahi	WAAKA	Wahangu	WHARAI	Hohepa
TIPENE	Kaio	WAAKA	Wi	WHARAI	Hone
TIPENE	Pehimana	WAAKA (MRS POPATA)	Hariata Kokori Aporo	WHARAI	Rahera
TIPENE	Rihi	WAAKA (NEE STEPHENS)	Frances Mary	WHARANGI	Raiha
TIPENE	Riki	WAAKA (NEE WIKI)	Marara	WHAREPURU	Wiremu
TIPENE	Unaiki	WAAKA/WALKER	Makoare/Max Hone	WHAREWAKA	Hami
TIPENE	Waaka Waitai	WAATA	Te Puku	WHAREWAKA	Heni
TIPENE (MRS DUNN)	Te Wai	WAATA/WALTERS (NEE IHAKA)	Maki Tame	WHAREWAKA	Hiki
TIPENE (NEE LUNDON)	Sophie	WAENGA	Andrew	WHAREWAKA	Hone
TIPENE (NEE RAPIHANA)	Riira Wi	WAENGA	Caroline	WHIO	Hoani
TIPENE/SELWYN	Puti	WAENGA	Cassino	WHIO	Mata
TIPU	John	WAENGA	Hetaraka	WHIOKE/WHEOKI	James Daniel
TIPU	Tressias	WAENGA	Joyce	WHIOKE/WHEOKI	Morehu Wiremu
TIPUNA (NEE HIKO)	Marama	WAENGA	Nau	WHIOKE/WHEOKI	Sidney Rahiri
TITO (NEE NEHO)	Sophie Sally	WAENGA	Paul	WHIOKE/WHEOKI	William
TOA (NEE APERAHAMA)	Huhana	WAENGA	Penaia	WI	Ngapera Teri
TOHIANGA/SIMEON (NEE MAHENO)	Tipina	WAENGA	Robbie	WI	Paora
TOHU	Hami Wetini	WAENGA	Tina	WI HONGI/WIHONGI	Ripeka
TOHU	Hariata Wetini	WAENGA (MRS WRIGHT)	Marihi (II)	WI MOKA	Katuku
TOHU	Hiiti Wetini	WAENGA/HEREWINI	Maata Raiha	WIKI	Frances Parani
TOHU	Himi Rameka	WAENGA/HEREWINI	Te Wau Raiha	WIKI	Hariata Hone
TOHU	Hone Wetini	WAGHORN (NEE NORMAN)	Natalie Gayle	WIKI	Heke Jame Keepa
TOHU	Kare Rihari	WAHAPU	Emere Eruera	WIKI	Henare Romana
TOHU	Kare Wetini	WAHAPU	Marama Eruera	WIKI	Hone Nutana
TOHU	Maria Wetini	WAIPOURI	Eruera Atarea	WIKI	Kaaka
TOHU	Meri Wetini	WAIPOURI	Frederick	WIKI	Kim
TOHU	Muriwai Rihari	WAIPOURI	Jacob/Hakopa	WIKI	Olwyn
TOHU	Ngawhao Rihari	WAIPOURI	Manuera	WIKI	Pahi Hone
TOHU	Rai Wetini	WAIPOURI	Marina Tia	WIKI	Quintin
TOHU	Takora Wetini	WAIPOURI	Matiu	WIKI	Ramarai Hone
TOHU	Teresa Corine	WAIPOURI	Matuku	WIKI (MRS CLARK)	Mereana
TOHU	Wahanga Rameka	WAIPOURI	Paul Charles	WIKI (MRS EVANS)	Maanga
TOHU	Whakarongo Wetini	WAIPOURI	Ritete	WIKI (MRS KAIPO)	Mariameno
TOIA (STEPHENS)	Miriam	WAIPOURI	Selwyn	WIKI (MRS NUI)	Mama Keepa
TOKO	William Shalone	WAIPOURI	Shepherd	WIKI (MRS PASENE)	Raewyn Rangimarie Keepa
TOMURI	Te Rima	WAIPOURI	Wiremu	WIKI (NEE KAPA)	Ngataua Rangiehu Karena
TOMURI (MRS POU)	Moori	WAIPOURI	Richard Sydney	WIKI TE WHAI (MRS POPATA)	Hera
TOONE/HARRISON	Hoori	WAIPOURI (MRS MARSH)	Merata Matiu	WIKI/HAGGER (MRS PALMER)	Mona Keepa
TOONE/HARRISON	Joe	WAIPOURI	Rora	WIKI/HARAWIRA	Hori
TOONE/HARRISON	Te Rere	WAIPOURI	Hori	WIKI/HARAWIRA	Mere
TOONE/HARRISON (MRS CHRISTENSEN)	Celia	WAIPOURI	Makinihni	WIKITAIHI/KEREHOMA	Hariata
TOONE/HARRISON (MRS PORTER)	Keita	WALKER	Danielle Rama	WIKITERA	Hone
TOOTI/TOATI	Puke	WALKER	Gary Tapsell	WIKITERA	Ririana
TOPINE	Wiremu Wiremu	WALKER	Ian Francis	WIKITERA	Te Paenga
TORONGE	Hone Te Pania	WALKER	Ngaronoa	WILKINSON (NEE ROGERS)	Joyce
TORONGE	Maaka Te Pania	WALKER	Rapi	WILLIAMS	Leslie
TOTARA	Hemo Titaha	WALKER	Shane Michael Patrick	WILSON (NEE NORMAN)	Elizabeth
TOTARA	Hetere Wiki	WALKER	Wehi	WILSON (NEE SYLVA)	Ngaio
TOTARA	Matene	WALKER (MRS FISHBURN)	Maxina Anne (Ann)	WINIATA	Maraea
TUAKANA MARE (NEE METE)	Marara	WALKER (NEE CLARK)	Annie Adelaide	WIREMU	Akinihni
TUAURU	Hauraki	WALLACE	Rehutai	WIREMU	Keeti Makumira
TUAURU	Mika	WALTERS (NEE PUKEROA)	Putangarou Tonga	WIREMU	Morehu Makamira
TUAURU	Paea	WARREN	Douglas Brian	WIREMU	Te Rehu
TUAURU	Raiha	WARREN (NEE SELWYN)	Ngahiraka	WIREMU	Waataria
TUAURU	Tamati	WATARIA	Hone	WIREMU (MAHENO)	Hami
TUAURU	Tame	WATSON (NEE PIKAAHU)	Stephanie Agnes	WIREMU (MRS KEREHOMA)	Ngawini
TUAURU	Taniora	WEIBEL	Caroline	WITANA	Maraea
TUAURU (MRS HETARAKA)	Maraea	WELLS	David	WITANA	Mereana
TUISAU	Kate	WELLS	Alan	WITANGA	Aperahama
TUKARIRI	Huirama	WELLS-MOLLOY (NEE MARSDEN)	Harriet	WITANGA	Maraea
TUKINO	Pere Hira	WERAHIKO	Eruera	WRIGHT	Fred
TUMAI (NEE STEPHENS)	Angel Moengaroa	WETINI/TOHU	Pire	WRIGHT	John Davidson Edward
TUMU	Ngawiki	WHAKAMAU	Hemi	WRIGHT	Robert Edward
TUPUNI (MRS KAIPO)	Mata Te Rua Matiu	WHANAU TRUST	Charlie Paraone Broughton	WRIGHT (NEE POATA)	Mary Kahutaha
TUSOM (NEE HARRIS)	Ngawai	WHANAU TRUST	Fred Raharuhi	YATES	Betty
TWADDELL	Edward Noel	WHANAU TRUST	Hedwig Hoki Landon & Albert Harris	YATES	Glass
URUHAU	Kata Ihaka	WHANAU TRUST	Hohepa and Laura Holloway	YATES	John Hone
URUHAU	Morunga Ihaka	WHANAU TRUST	James & Pinikera	YATES	Taihaupapa
URUHAU	Rimini Ihaka	WHANAU TRUST	Karu Me Heeni Ngarare Mehana	YATES	Terence Arthur
UTIKA	Tari	WHANAU TRUST	Kataraina Oneroa Witika		
VAUSE/BOYCE (NEE SELWYN)	Jane	WHANAU TRUST	Kawana Matenga		
VINCENT	Harriet Hine	WHANAU TRUST	Marahia & Tipene Kirkwood		
WAAKA	Aporo	WHANAU TRUST	Maurice & Ellen Te Taiawatea Anderson		
WAAKA	Eparaima	WHANAU TRUST			



Notes



Notes



*Ngainanga Kapa, Deputy Chair,
showing rangatahi their future.*

Pārengarenga Incorporation

6636 Far North Road, RD4, Kaitaia 0484

Tel +64 9 409 7831 | Freephone 0800 PARENGA (727 364) | Email info@parengarenga.co.nz