

PARENGARENGA INCORPORATION

NEWSLETTER

May 2022

MATARIKI

Matariki signals the Maori New Year in June. It is the time to reflect on:

- ★ The Past Year
- ★ Celebrate the present
- ★ Plan for the year ahead



“THE TEAM”
PARENGARENGA INCORPORATION
SHAREHOLDERS and WHANAU TRUSTS



Committee of Management	
Chair	Chad Paraone
Vice	Huia Cooper
Trustees	Clayton (George) Wiki Joyce Munns Pereniki (Niki) Conrad Ngainanga (Naina) Kapa Jack Ratu
General Manager	Barry Bouton



ADMINISTRATION	FARM	FORESTRY
<p>Team Gillian Harper Nik Karena Mike Wikitera Phyllis Kapa</p>	<p>Manager Julian Peters</p> <p>Staff Johnny Everitt, Ian Smith Simon Abraham, Joshua Nathan Lewis Brown, Milton Leef Seibert Ropiha, Shannon Wiki Steve Larsen, Leona Waenga Roy Garea, Murray Larsen</p>	<p>Operations Manager Dan Henderson senior</p> <p>Staff Tutangiora Nathan, Clifford Ujdur Henare Hobson, Chappie Brown Dan Henderson junior Ben Johnson, Taumutu Robson Paewai Ihaka, Mitchell Kaaka Mitchell Kaaka, Joseph Maaka Shadow Brown, Quinton Nathan Ezekiel Sio, Mike Wikitera</p>
<p>FINANCE AUDIT and RISK COMMITTEE</p>	<p>Advisory Team Niki Conrad (Chair) Terry Walters John Woodward Gerald White Naina Kapa Barry Bouton</p>	<p>Advisory team Joyce Munns (Chair) Jack Ratu Hugh Ford Grant Rowe Barry Bouton</p>
<p>Sam Johnson Chad Paraone Clayton Wiki Barry Bouton</p>		

Our Shared Values

Whakapono Me Te Tika – Honesty, Trustworthy, Integrity. We believe in an OPEN & HONEST approach with integrity to achieve TRUST. To uphold this, we will: do the right thing, be transparent, be honest, be reliable, be fair, be consistent, put things right.

Kaitiakitanga – Stewardship, Guardianship. We protect our WHENUA and WAI. We VALUE our CULTURAL IDENTITY and PRACTICES. To uphold this, we will: protect and enhance our natural environments, protect our taonga and sites of significance, care for our people and community, support and be guided by our culture. Nurture our Tikanga, Whakapapa and Spirituality.

Manaakitanga – Respect, Generosity, Reciprocity, Kindness, Aroho Ki Tetahi – We RESPECT & CARE for everyone in our WORK and WORKPLACES. To uphold this, we will: care for the mana & wellbeing of our people, our guests & our community. Be respectful, act with humility, act with compassion, cultivate healthy relationships, offer equal opportunity, prioritise health and safety.

Rangatiratanga – leadership, team-work, growth. We work with our LEADERS to build STRONG TEAMS that enable SUSTAINABLE GROWTH and OPPORTUNITIES in our COMMUNITY. To uphold this, we will: lead by example, grow our people & develop our teams, foster skills and knowledge, communicate well, value the input of all, recognise achievements, strive for best practice & excellence, be responsible for self, team and community.

Kia Ora Everyone

The Committee of Management warmly welcomes you to our May 2022 Newsletter and a brief catch up since our 2021 AGM.

Let us firstly acknowledge those who have passed since our AGM. To those whanau, our prayers and thoughts are with you.

To you ALL we hope you are well, safe and especially warm as we slowly move into the chilly months of Winter.

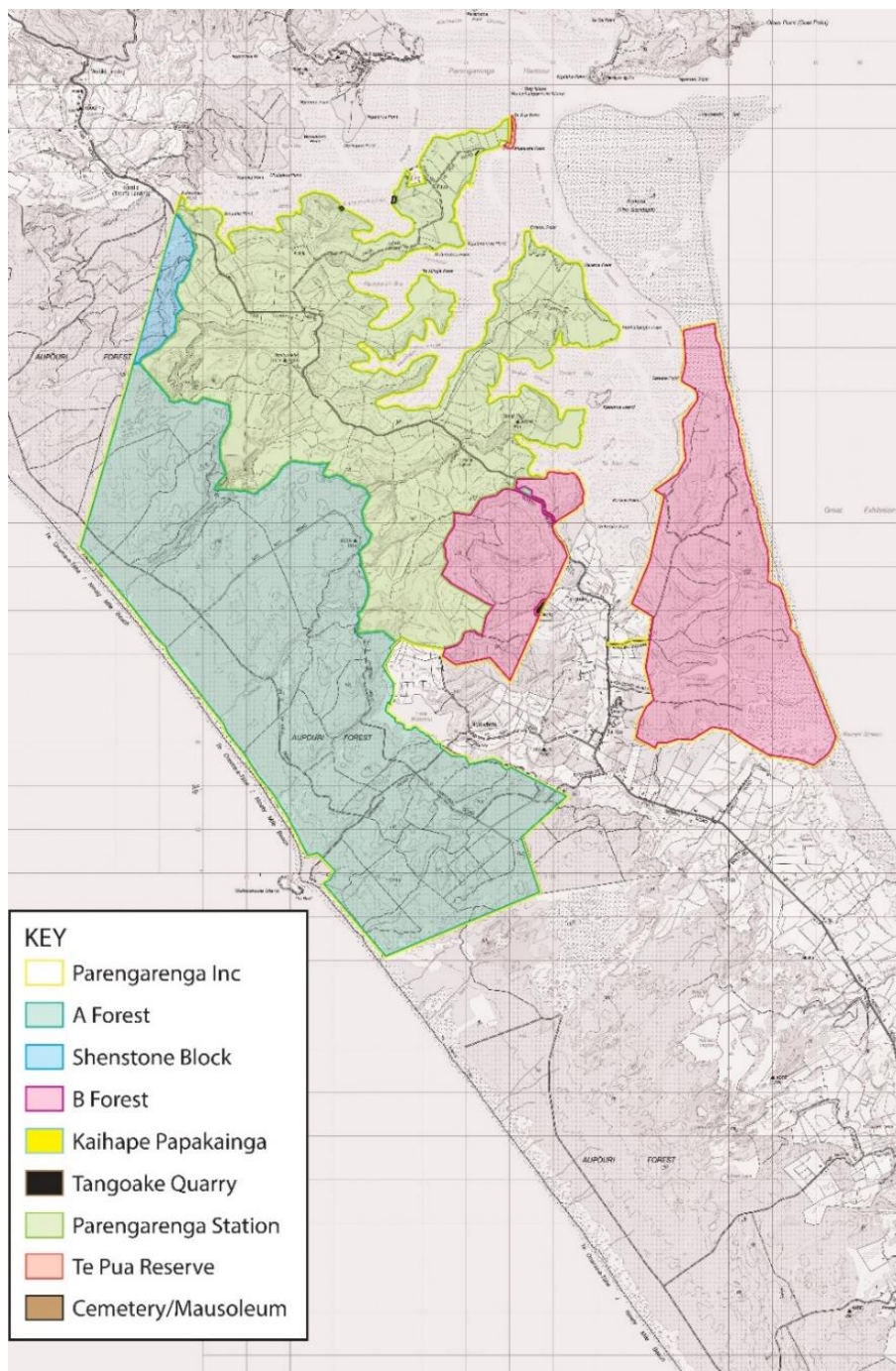
Over the past two years, COVID-19 has affected us ALL in different ways – throughout the country.

[PLEASE DO NOT HESITATE to contact us if you need assistance.](#)

STAY WELL & SAFE

General Manager Update

At the 2021 Special General Meeting held on 30 October 2021, a majority of our shareholders voted in support of purchasing the B Forest (Te Kao Forest) tree crop from Taumata Plantation. We now proudly own 100% of the land and trees!



We are about to start the last year of a 3-year development plan for our farm. The results of the plan over the first 2-years have been excellent and our farm is once again producing healthy profits on a consistent basis. There has been some movement amongst our farm staff and, where possible, we fill those vacancies with locals. Sometimes it is difficult to find locals with the right experience and so we try to train internally as much as possible, including cadetships.

Our recent vacancies have been filled by local persons all connected to the Incorporation, either as shareholders or beneficiaries of shareholders. Most have young families. Recently Ezekiel Sio joined our team.

We are trying very hard to update the Fishfarm Share Register, so that it reflects the legitimate owners of Fishfarm shares and their contact details. This is difficult because there are a number of original shareholders that have deceased. If successful, we are hoping to make an offer to all shareholders to purchase their shares. If an offer is made, it will need to be accepted by all shareholders, otherwise the purchase will not proceed. The assets of the Fishfarm have been devalued over time, but to provide shareholders with comfort, we will have a share valuation done by Ernst and Young (an international auditing company). The share offer will not be less than this valuation and may be more.

Forest

Harvesting Parengarenga A Forest begins January 2023. The Committee of Management has invested \$5 million in machinery and training. We continue to employ locally and welcome Ezekiel Sio to the Forestry team.

Our short-term harvesting operations provide a substantial profit and continue to improve the quality of the forest through our on-going thinning programme.

We start the harvesting of our main crop in January of next year, a date that is now just around the corner. The Committee of Management made the decision to invest over \$5 million in machines and to train our own staff to work our forest. That is great news for local employment and our forest operations will only grow from here.

A view of Compartment 420 that is being opened up



Cliff Ujdur working on the skid site



Farm

We start the final year of the 3-year Development Plan. There have been some outstanding results over the last 2 years.

In February, we met with the Environmental planners. Protecting Parengarenga Harbour is paramount, so fencing and planting of native trees commenced in 'Pitt Paddock Gully'. This will improve water quality flowing into the harbour and reduce erosion.


Mulching Autumn pasture to promote quality growth



Bulls in the new yards at Steamers Point



Projects

<p>Te Mana O Te Wai Te Hiku Provincial Growth Fund</p>	<p>Renewable Energy</p>
<p>The Incorporation has joined with Ngati Kuri Trust Board to conduct research on the availability of water on their respective lands for horticulture developments. The analysis has begun and a government loan to fund the project is being finalised.</p>	<p>Discussions have been had with an overseas renewable energy generation company. An agreement has been entered into to investigate the feasibility of establishing a windfarm. There is a possible 5 to 6-year development timeline.</p>
<p>Biochar</p>	
<p>We continue to investigate into the conversion of our forest wood cuttings into biochar. We have to date received 75% research funding for this purpose. There are many potential uses for biochar. No doubt its uses would be beneficial to our farming practice.</p> 	

Remember, these projects are in an 'Investigation' stage. The Committee of Management will update and consult with you, the Shareholder/Beneficiary, within time.

Te Pua Reserve

Te Pua Reserve had a successful season running from November through to the end of April. Although being limited by the number of campers allowed due to the COVID restrictions, Phyllis Kapa (our Campground Manager) was still kept busy during the open season and was at capacity during the Christmas/New Year. The weather was beautiful and the fishing bountiful, with campers and day trippers from all across Aotearoa and of course our own backyard.

We would like to express our gratitude to all who were involved with the tragic sinking of the fishing charter boat Enchanter and the Search & Rescue effort that was based at Te Pua Reserve. We offer our sincere condolences to the whanau.

We look forward to seeing many of you for the next season.



Domestic Rubbish Issue

We continue to have domestic rubbish dumped on our estate, resulting in ongoing costs to have it removed. Recently the Jobs for Nature team from Te Runanga Nui o Te Aupouri, led by Pereniki Conrad, worked hard to clean up the rubbish at the fire break on Boxes Hill for us. Thanks to this team for the assistance. Actions are underway to secure the area from further rubbish dumping.



Solar powered, black out blinds for Potahi Marae, sponsored by Parengarenga Incorporation



NOTICES

Annual General Meeting is being held on Saturday 26th November 2022 at Potahi Marae in Te Kao.

KIA PUMAU TE ORA

Maintain Good Health and Wellbeing

KIA HAUMARU

Keep Safe

ENQUIRIES

PLEASE!!!

IF YOU NEED ANY ASSISTANCE
CALL OR WRITE TO US

THE FRIENDLY PERSON BEHIND YOUR QUESTION
WILL ASSIST YOU WITH A SMILE.

Office Hours: Monday to Friday
9.00am to 5.00pm

Address: 16 Te Rawhitiroa Rd
RD 4, KAITAIA 0484

Telephone: (09) 409 7831
Freephone: 0800 PARENGA (727364)
Email: info@parengarenga.co.nz

Shareholder Matters

There continues to be many enquiries with regards to shareholder matters relating to the Incorporation, which is pleasing to see. The enquiries from whanau include transferring shares, finding out how to go about Succeeding to whanau who have passed, and general enquiries about who we are and what we do for shareholders.

We have many shareholders who were born in the late 19th century that still remain as shareholders today, many with no contact details. We are very interested in helping whanau to Succeed to these shares, to enable those shares to have a voice of a living shareholder. If you think you may have whanau with historic Maori land shares with us, please do call our office on 09 409 7831, press option 2 to speak to Gillian. She is able to work in conjunction with the Maori Land Court to access Maori land records as part of her role with us. There is no cost to you for Gillian's time.