



Newsletter June 2016

Korohi pō korohi ao

Ko Rongo i tūria ki te matahau o Tū

Tū te winiwini Tū te wanawana

Tū i whakaputaia ki te wheiao ki

Te ao mārama tihei mauriora!

E ngā mana e ngā reo e ngā kaupupuri hea
tēnā koutou katoa.

Ngā aitua kua wehe atu ki tua o Paerau

Haere atu koutou

Hoki atu ki te kāinga tūturu mo tātou te tangata

Koutou te hunga mate ki a koutou

tātou te hunga ora ki a tātou

Tihei Mauriora!

Acknowledgements

The Trustees acknowledge the recent passing of Charlie Petera, the youngest and only surviving member of the 28th Maori Battalion A Company 'Gumdiggers'. Sir Graham Latimer, one of our country's most prominent Maori leaders, was also laid to rest this month also. He was born on the Aupouri Peninsula south of Te Kao.

Staffing Update

This year, so far, we have had a number of staffing changes take place. In April Josh Williamson the Farm Manager on Paua Station resigned after 5 years with us to take up a position on Mount Linton Station near Invercargill. Our builder, Grant Kidd, also resigned in April and is now building on Waiheke Island.

This year our lease for Cape View Station is due to come to the end, on 30 June 2016. Neil St George and Anne Walker have been running this farm for us and have done a wonderful job. With the livestock now sold to capitalise on high pricing, both Neil and Anne have now left the Incorporation.

Last year, Terry Walters was appointed as our new General Manager. He and his wife have two daughters each with a son living in Hawke's bay. They have decided that being closer to their

daughters and young grandsons is very important to them and it was with great sadness that Terry has now left the Incorporation.

The Trustees have appointed Pete Hill as the Interim General Manager and here is a message from him. 'I'm very pleased to have the opportunity to fill the vacant seat created by Terry's departure for at least the next 3 months. For those that don't know me I live in Houhora next to the Golf Course since moving back here in 2008, after a short stint in the family home in Te Ahu Road. For the last 6 years I have been Chief Financial Officer at CBEC in Kaitaia and now look forward to a short drive north each day rather than the 50kms to town! I will generally be here in the office Monday – Thursday and if you're in the vicinity you are most welcome to call in for a chat. Terry gave me an excellent handover and has left some big shoes to fill. I hope I can do justice to his hard work over the last 13 months. Gillian has so far been very patient with me....'

The Trustees are in the process of recruiting for the General Manager role.

For many years our farms, Te Rangi Station and Paua Station, have traded independently. With advice and guidance from Terry, our Farm Advisory Team and our accountants, we are now trading our farms as one farming entity. An internal process within the Incorporation was used to appoint Duanne Golley as the Farm Manager of the farm and now all farm staff report to Duanne.

Farming Update

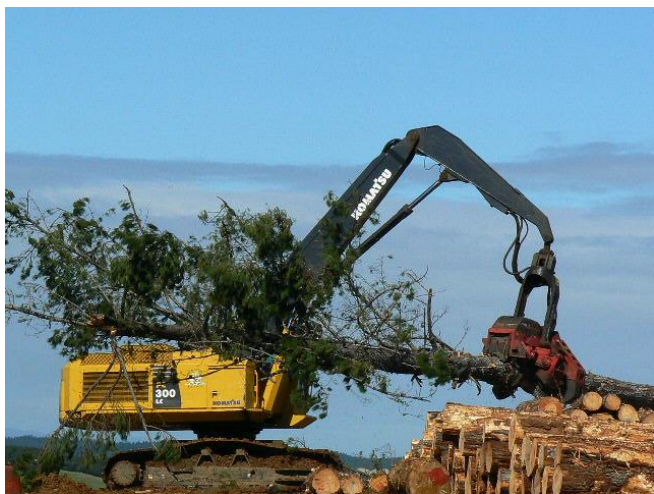
The Farm Manager and his staff continue to implement the Farm Development Plan that incorporates the investment into new fencing, the expansion of our existing water systems, amongst other priorities.



Our lease of Cape View Station comes to the end of its term on 30 June this year. In April we held a very successful livestock sale onsite, selling all our livestock that we had for sale that were on the lease block. Te Kao School parents and teachers were given the opportunity to provide food and drinks on the day of the sale for farmers and livestock buyers, and were able to raise some funds towards their trip to Rarotonga.

Forestry Update

As you will be aware, harvesting of our Te Kao forest was due to conclude this year. We have been advised by the Forest management company, Hancock Forest Management (NZ) Limited, that harvest has now concluded. The cutting down of the last tree in the first rotation for this forest was attended by Trustee Rihari Wiki, John Ellis and staff from Hancock's and Henderson Logging. Speakers for the day were Lenny Murray, Andrew Widderslow, Rihari Wiki and John Ellis. For a short period, we will not have any income from our forests.



The mechanical harvesting of the last tree.

Ahuwhenua – Christian Peterson

Christian Peterson, mokopuna of the late Roimata and Lyn Kaaka, son of Georgina and Bo Peterson of Te Kao, is a Whenua Kura cadet. Christian trains with Ngai Tahu Farming Limited located near Oxford at the foothills of the Southern Alps and they were finalists in the 2016 Ahuwhenua Trophy BNZ Māori Excellence in Farming award.

Te Tumu Paeroa Agreement

At our AGM in November 2015 the Incorporation achieved a significant milestone with the signing over of the live-buy shares under the Maori Trustee. The Trustees are in the process of arranging for the offered interest-free loan details to be formalised and when this has been put in

place, legislation requires that the shares be vested in the current owners on a pro-rata basis. Following is commentary around the returning of the land, provided by Te Tumu Paeroa.



Returning the land

Deputy Māori Trustee Tiaki Hunia represented Te Tumu Paeroa at a milestone AGM for Parengarenga Inc last weekend. One that has its roots in the urban Māori migration of the mid-20th century.

That urban migration of Māori has been described as the most rapid movement of any population. In 1945, 26% of the Māori population lived in the towns and cities. By 1966, this had grown to 62%.

“For most Māori it was not a drift, but a deliberate migration in search of what has been described as ‘the Big Three’: work, money and pleasure. In the beginning, the majority of migrants were unmarried young Māori looking for a more ‘modern’ life. Many saw their home communities as too conservative and slow. The bright lights of the city offered adventure.” Te Ara.

One of the ways in which the Government encouraged this urban drift was through “Live Buying” and that’s where Te Tumu Paeroa, formerly the Māori Trustee, comes into the picture.

Live Buying was voluntary share sales to the Māori Trustee. It was a way in which Māori moving from rural to urban locations could raise money from land holdings by selling their shares to establish themselves in their new lives.

Live Buying – the impact

The impact on Parengarenga Inc was significant and over a quarter of our property ended up under Māori Trustee ownership through ‘Live Buying’.

Kaumātua and former Chairman, Winiata Brown remembers it happening and described how many received cheques in the mail ‘it was like pennies from heaven and you didn’t ask too many questions’. It was much later on, he recalls, that the penny really dropped and people realised they had lost their ancestral land and birthright for ever.

Live Buying was abolished by the Māori Affairs Amendment Act 1987 but since then 26% of Parengarenga shares have remained with Māori Trustee. Although the shares we held could only be sold back to the remaining owners, the legislation that sat around their sale meant that they could not be bought back bit-by-bit, but had to come back in one block and then be vested in all the other owners on a pro-rata basis, once the debt to the Māori Trustee had been paid in full.

The complex journey

The process to have this land returned to us has been a complex 30-year journey which ended on Saturday 28th November 2015 when at a moving ceremony on Potahi Marae, Tiaki signed across the shares that the Māori Trustee held.

It's taken some lateral thinking and good relationship building to make it happen. As part of the agreement Te Tumu Paeroa (on behalf of the Māori Trustee) has provided an interest-free loan to Parengarenga Incorporation for the full amount of the shares.

As Tiaki Hunia said on the day, 'we can't change the past but we can do our best to put it right.'



Chris Rich and Tiaki Hunia from Te Tumu Paeroa and Chad Paraone, chairman of Parengarenga Incorporation at the signing. Ngainanga Kapa signing below.



Amalgamation Update

In April this year we were advised by the Maori Land Court that Judge Ambler has meticulously worked through the information that we have provided and has advised that the Court will provide the steps that we are required take to complete the amalgamation. We eagerly anticipate receiving the process information that we are to use from the Court and we look forward to being able to update you on this.

Supporting Our Community

We continue to support our local organisations in any way possible.

Our 50th Annual General Meeting



On 4th March 1965 the Maori Land Court mandated Parengarenga Incorporation. Therefore, we had the pleasure of celebrating our 50th birthday last year and to acknowledge this milestone, a wonderful cake was made by Ria Slade with the cutting ceremony lead by Winiata Brown and Leni (Geranium) Kapa.

Collaboration Discussion

Our Trustees met with the Trustees of Te Runanga Nui o Te Aupouri last month to begin discussions around collaborating together. We look forward to future engagement with them.

2016 Annual General Meeting

The Parengarenga Incorporation Annual General Meeting is scheduled for Saturday 26th November at Potahi Marae, Te Kao. This will be our 51st AGM. This year there are two Trustee / Committee of Management positions that will be up for election, which are currently held by Maahia Nathan and Harry Kapa.

Shareholder and shareholding queries – can you help please?

We would appreciate current contact details for the whanau of the following shareholders:

1. Makoare Rapine Taurere
2. Haromi Honetana (Mrs Johnston)
3. Marino and Ngawaiata Ngarama
4. Erana Paratene
5. Isabella Anne Patricia Broughton (nee Tahana)
6. Sidney Henry Fitzsimmons
7. Erana, Riwai and Kamariera Wire Kamariera
8. Te Pana and Kaipuke Waata Te Paa
9. Ngarimu Haimona
10. Nikora Joseph Heremaia
11. Ramari Wiremu Henare
12. Aomarama, Pua, Heke and Rangimarie Wiremu Henare
13. Ritete Waipouri
14. Ngawini Wiremu
15. Kimiona Tupakihi Kamira
16. Rawhiti Tasman Hemi Manuera
17. Hami Tame Mare
18. Marara Wiki Takerei
19. Eri Herewini
20. Kataraina and Kararaina Kapa/Reweti Paepae
21. Tiini Harawira
22. Hohaia I Atama
23. Haukaikino and Matire Atama/Adams
24. Kahu Irene and Rangi John August
25. Pereiha Erueti
26. Eri and Takuira Kereopa
27. Harawira and Kiri Wiki Takerei
28. Hare and Herora Taiawarua
29. Ihutai and Titaha Te Horo
30. Waaka Waitai Tipene
31. Frank Harris
32. John Davidson Edward and Robert Edward Wright
33. Werahiko Ivan Taylor
34. Hohepa and Piri Rapine Taurere
35. Puia Witana Natanahira (Mrs Neho)
36. Pere Riwhi Henare
37. Hone Tepania
38. Rangi Tuakana Murray
39. Eruera Arthur Wiremu Maika/McMath
40. Toko Hoani Matenga
41. Miraka, Matekino and Wiremu Rupapera
42. Marara Tuaka Mare (nee Mete)
43. Barbara Ngaire Tomuri (Mrs Hayward)
44. Matehaere Henare
45. Hamiora Poari Kaipo

46. Kathleen Kiwikiwi (Nee Kaipo)
47. John Howard and Roger Rangi Keefe
48. Martha Lovie Te Aho (nee Keefe)
49. Rora Waiwera Joe (nee Keefe)
50. Seamon Waimoana Joseph Hokianga
51. Mereana Hone
52. Peata Hepa (nee Te Wiroa)
53. Morehu and Freda Puhi Harawira
54. Te Rina Enoka (nee Wiki te Whai)
55. Piurangi Rata/Ryder (nee Karena)
56. Paraone Tuakana Murray
57. Maki Tame Waata/Walters (nee Ihaka)
58. Tamamoko Hakaraia Karaka
59. Ngatu Ngakuru Nopera
60. Pene Hohepa Kapa

We have hundreds of shareholders without any address or contact details for many reasons and we want to be able to contact as many as possible to update them on the matters of the Incorporation. Please do contact this office if you can help with any of these people above and to check if there may be others that you may know.

Our contact details

We are now located at 6636 Far North Road, Te Kao, signposted by the 70km sign at the bottom of the hill. Our postal address is 6636 Far North Road, RD 4, Kaitaia 0484. Telephone: (09) 409 7831. Email: info@parengarenga.co.nz

We are on [Facebook](#). Please **Like** us and keep in touch with what we are up to.

We have a database of shareholder **email addresses** so that we can provide shareholders with newsletters, updates and other correspondence directly via email. This makes it easy for you to circulate our correspondence and also helps to reduce our postage costs. If you would like to be on this list, please let us know at info@parengarenga.co.nz

